



Cam Units CRX
Schieber CRX
Unità a Camme CRX



OMCR[®]
STANDARD DIE COMPONENTS



UTILITY MODEL 20 2014 90 2313403

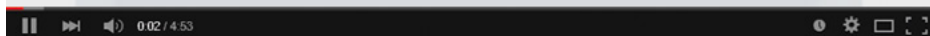
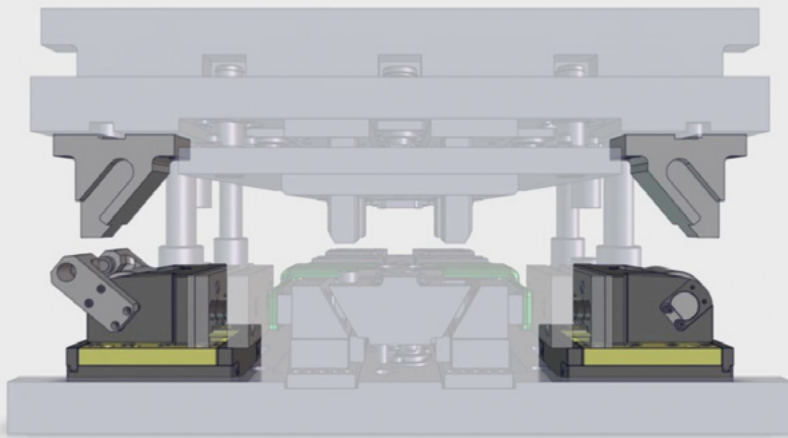
OMCR CODE	Work Angle	Slider Width (mm)	Work Area W x H (mm)	Max Work Force 10 ⁶ cycles (kN)	Extraction Force (kN)	Page number
	β			Fs	Ef	
CRX01	-15°÷50°	78	78x63	45	2,5÷3,4	834
CRX03	-15°÷50°	98	98x63	76	3,4÷3,6	840
CRX05	-15°÷50°	118	118x74	142	6,36÷6,46	846
CRX15	-15°÷50°	170	170x94	166	6,45÷6,61	852
CRX20	-15°÷50°	240	240x110	258	9,29÷9,38	858

ROLLER CAM DRIVER - TREIBER FÜR ROLLENSCHIEBER - CUNEO PER CAMME A RULLO

OMCR CODE	Roller Cam Model	Work Angle β	Page number
DCRX0100	CRX01	-15°÷50° (5° steps)	864
DCRX0305	CRX03 - CRX05	-15°÷50° (5° steps)	866
DCRX1520	CRX15 - CRX20	-15°÷50° (5° steps)	868

Cam Units CRX

100% SAFETY WITH POSITIVE RETURN - 100 % SICHERHEIT MIT DER ZWANGSRÜCKHOLUNG
100% SICURA CON IL GANCIO DI RITORNO

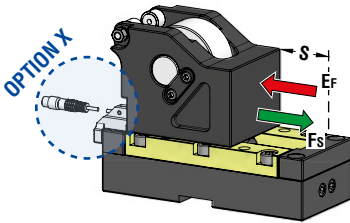


CRX: how does it work?
CRX: wie funktioniert es?
CRX: come funziona?





ROLLER CAM UNIT - ROLLENSCHIEBER - CAMMA A RULLO



OMCR CODE	Stroke (mm)	Max Work Force (kN)	Extraction Force (kN)
			Ef
	S	Fs	Gas Spring
CRX01.030	30	45	2,5
CRX01.050	48	45	3,4

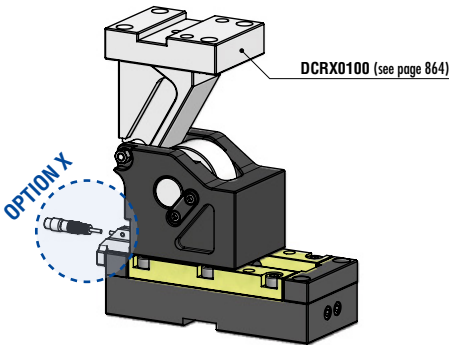


WEB

WEB

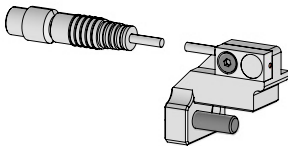
P.624

With Driver - OPTION DRIVER



OPTION DRIVER	Work angle (β)
H15	-15°
H10	-10°
H05	-5°
000	0
L05	5°
L10	10°
L15	15°
L20	20°
L25	25°
L30	30°
L35	35°
L40	40°
L45	45°
L50	50°

Back Position Check - OPTION X



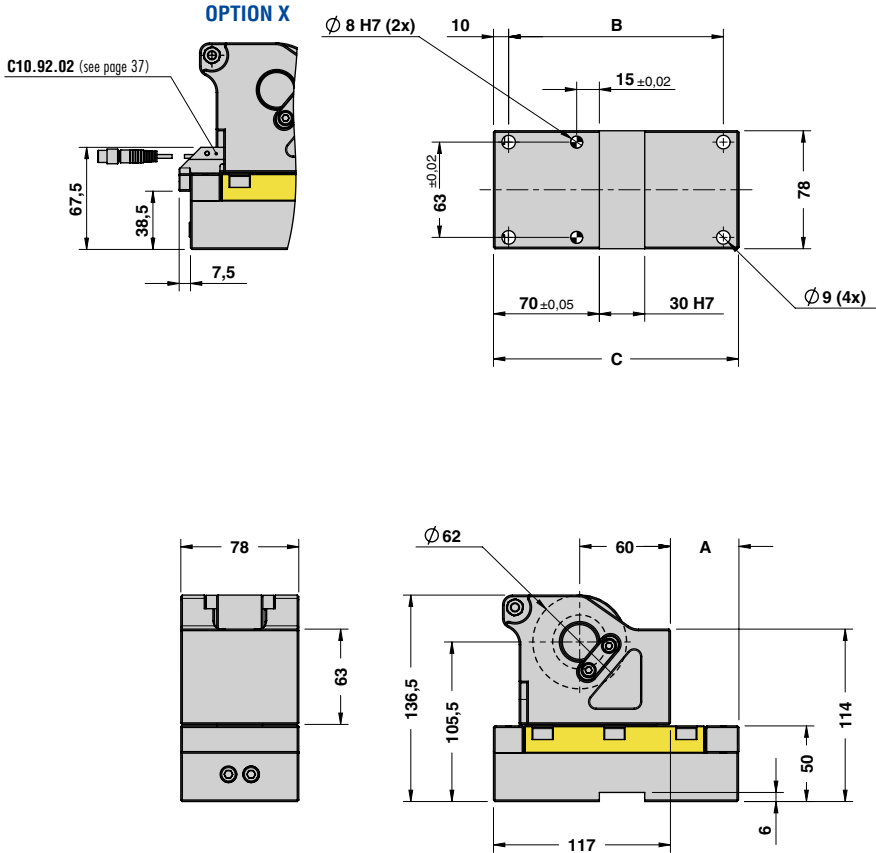
Montable on right or left side
auf rechte bzw. linke Seite montierbar
Montabile sul lato destro e sinistro

STOCK	ORDER EXAMPLE	Art.	OPTION DRIVER	OPTION X
		CRX01.050	000	X

OMCR CODE	Stroke (mm)	Overall Dimensions (mm)		
	S	A	B	C
CRX01.030	30	45	142	162
CRX01.050	48	65	162	182



ROLLER CAM UNIT - ROLLENSCHIEBER - CAMMA A RULLO

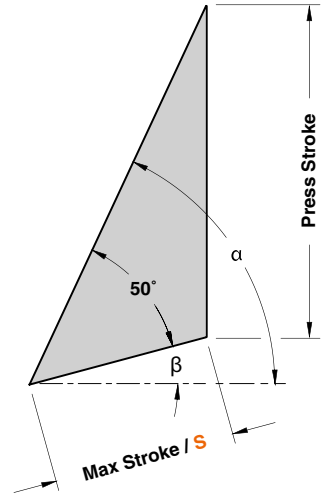
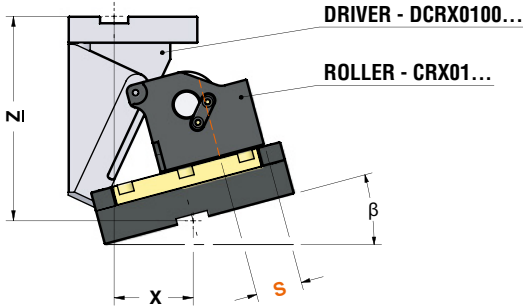


Cam Units CRX

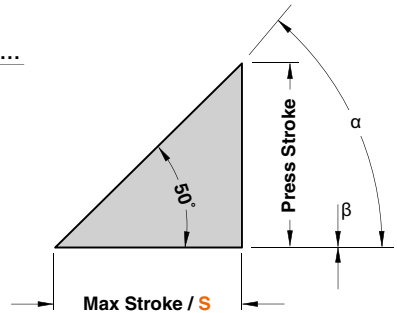
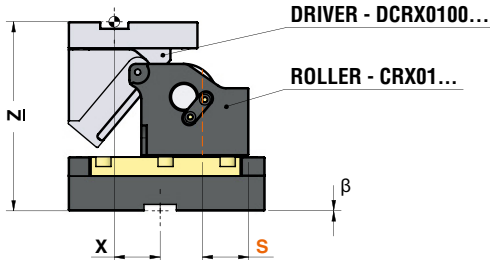


ROLLER CAM UNIT - ROLLENSCHIEBER - CAMMA A RULLO

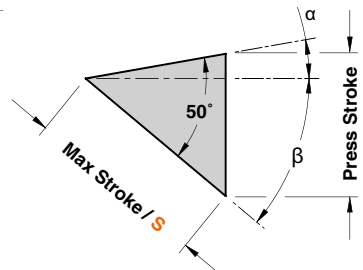
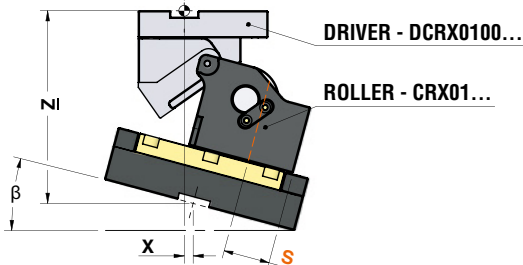
WORK ANGLE (β) FROM -5° TO -15°



WORK ANGLE (β)= 0°



WORK ANGLE (β) FROM 5° TO 50°

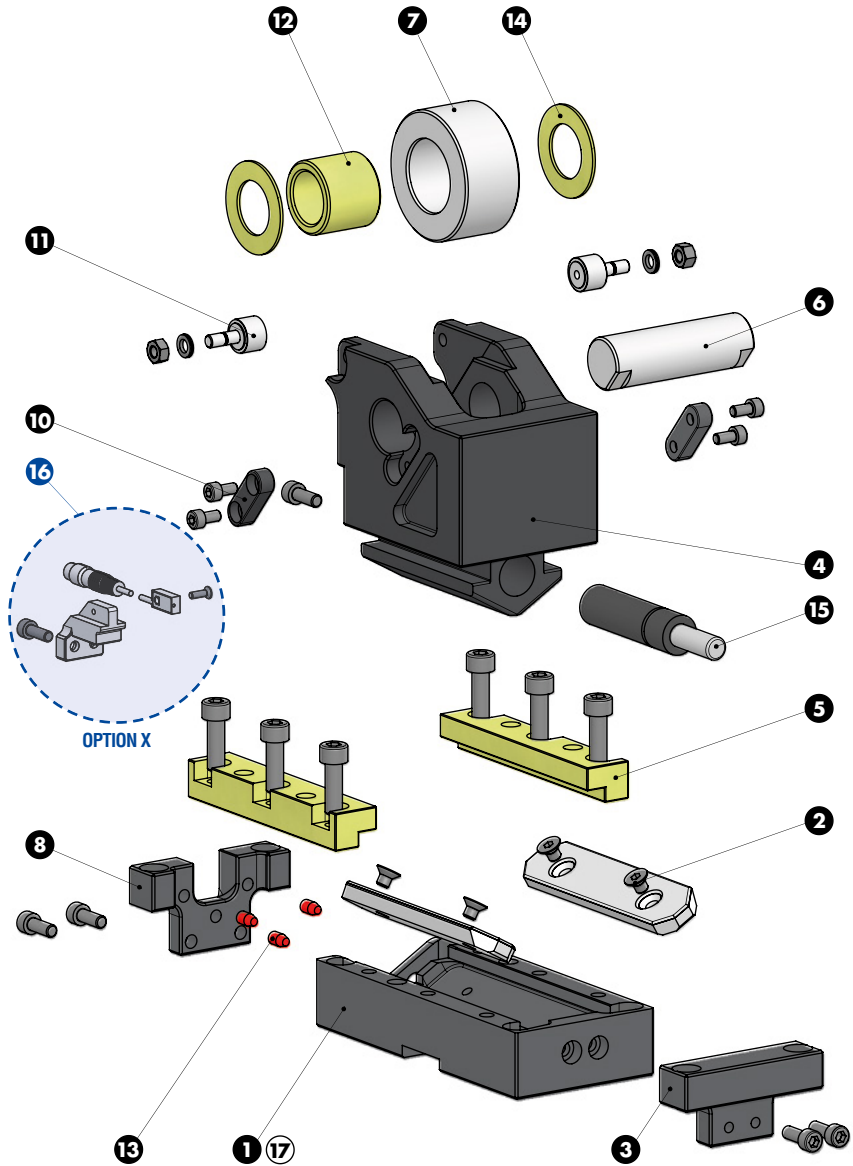




ROLLER CAM UNIT - ROLLENSCHIEBER - CAMMA A RULLO

*For more info see page 834 / Weitere Informationen finden Sie auf der Seite 834 / Per maggiori informazioni consultare la pagina 834

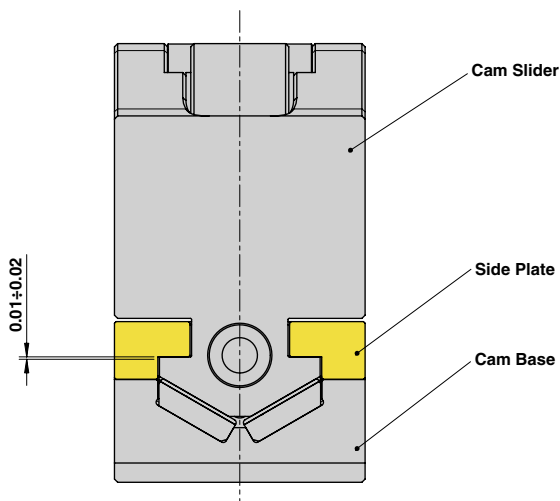
ROLLER CAM CODE	Work Angle β	α	Max Stroke S (mm)	Press Stroke (mm)	*CAM DRIVER CODE	X (mm)	Z (mm)
CRX01.030	-15°	65°	30	54,4	DCRX0100.30.H15	73,20	175,60
	-10°	60°	30	46,0	DCRX0100.30.H10	63,49	174,00
	-5°	55°	30	40,1	DCRX0100.30.H05	53,23	169,90
	0°	50°	30	35,8	DCRX0100.30.000	42,50	175,00
	5°	45°	30	32,5	DCRX0100.30.L05	31,37	172,50
	10°	40°	30	30,0	DCRX0100.30.L10	19,93	175,00
	15°	35°	30	28,1	DCRX0100.30.L15	8,27	176,94
	20°	30°	30	26,5	DCRX0100.30.L20	-3,52	178,46
	25°	25°	30	25,4	DCRX0100.30.L25	-15,36	174,64
	30°	20°	30	24,5	DCRX0100.30.L30	-27,15	173,54
	35°	15°	30	23,8	DCRX0100.30.L35	-38,80	171,21
	40°	10°	30	23,3	DCRX0100.30.L40	-50,23	166,66
	45°	5°	30	23,1	DCRX0100.30.L45	-61,35	161,93
50°	0°	30	23,0	DCRX0100.30.L50	-72,07	157,02	
CRX01.050	-15°	65°	50	87,01	DCRX0100.50.H15	73,20	192,99
	-10°	60°	50	73,54	DCRX0100.50.H10	63,49	186,46
	-5°	55°	50	64,11	DCRX0100.50.H05	53,23	190,09
	0°	50°	50	57,2	DCRX0100.50.000	42,50	177,38
	5°	45°	50	52	DCRX0100.50.L05	31,37	182,00
	10°	40°	50	48	DCRX0100.50.L10	19,93	177,00
	15°	35°	50	44,89	DCRX0100.50.L15	8,27	179,81
	20°	30°	50	42,46	DCRX0100.50.L20	-3,52	177,54
	25°	25°	50	40,57	DCRX0100.50.L25	-15,36	174,43
	30°	20°	50	39,13	DCRX0100.50.L30	-27,15	170,87
	35°	15°	50	38,07	DCRX0100.50.L35	-38,80	171,93
	40°	10°	50	37,34	DCRX0100.50.L40	-50,23	162,66
	45°	5°	50	36,91	DCRX0100.50.L45	-61,35	158,09
50°	0°	50	36,77	DCRX0100.50.L50	-72,07	153,23	

**ROLLER CAM UNIT - ROLLENSCHIEBER - CAMMA A RULLO**



ROLLER CAM UNIT - ROLLENSCHIEBER - CAMMA A RULLO

SLIDER STRUCTURE AND CLEARANCES



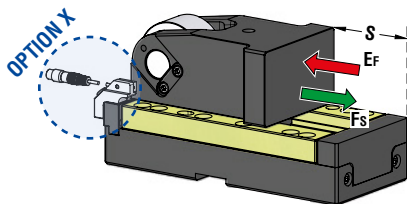
PART LIST

Particular number	Description	Material	Quantity
1	Cam Base	CK45	1
2	Wear Plate	Si42 + Syntered layer	2
3	Spring Stopper Plate	CK45	1
4	Cam Slider	CK45	1
5	Side Plate	CuZn25Al5 + Graphite - HB > 190	2
6	Pin	16NiCrMo4	1
7	Roller	100Cr6	1
8	Stopper Plate	CK45	1
10	Key	CK45	2
11	Roller KRV16PPA	CK45	2
12	Self-Lubricating Bush	CuZn25Al5 + Graphite - HB > 190	1
13	Elastomer Cap	Elastomer 92SH	3
14	Washer PCMW 264401.5M	-	2
15	Gas Spring	-	1
16	Back Position Check - OPTION X	-	1
17	Cam Base Fixing Screws M8x30 DIN 912	-	4



ROLLER CAM UNIT - ROLLENSCHIEBER - CAMMA A RULLO

Without Positive Return - **OPTION K**



OMCR CODE	Stroke (mm)	Max Work Force (kN)	Extraction Force (kN)	
			Ef	Gas Spring
	S	Fs		
CRX03.050	48	76	3,4	
CRX03.080	78	76	3,4	
CRX03.100	98	76	3,6	

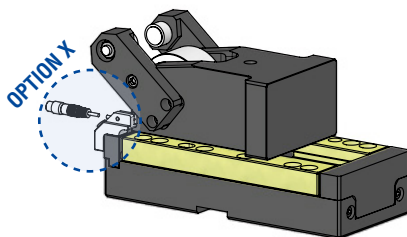


WEB

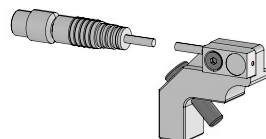
WEB

P.624

With Positive Return - **OPTION P**

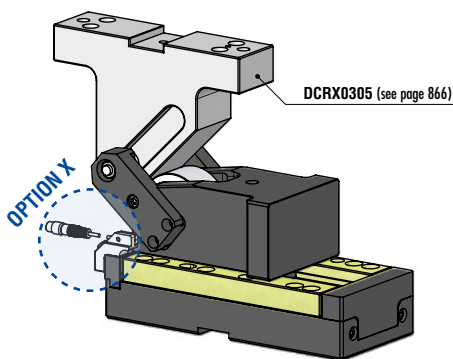


Back Position Check - **OPTION X**



Montable on right or left side
auf rechte bzw. linke Seite montierbar
Montabile sul lato destro e sinistro

With Driver - **OPTION DRIVER**



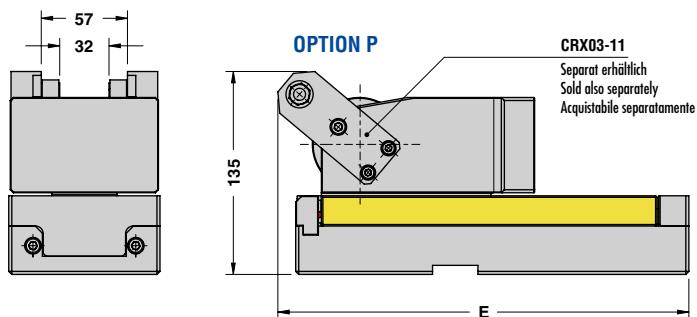
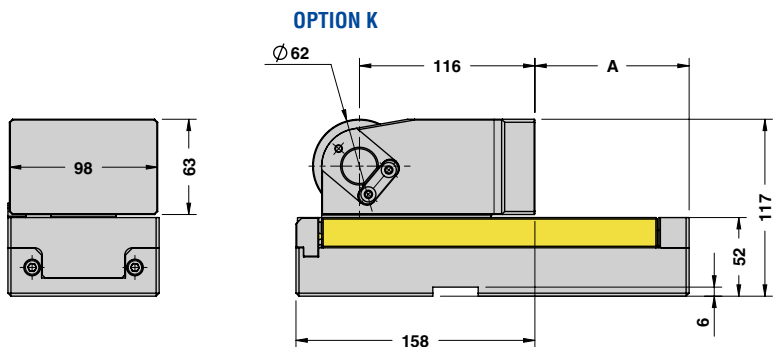
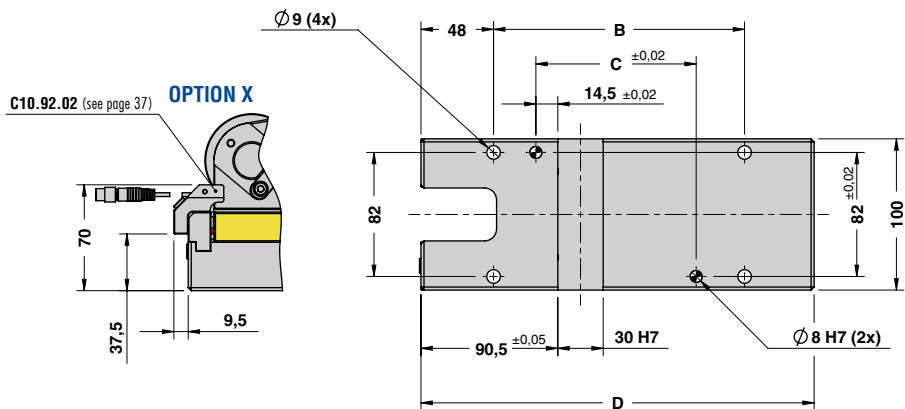
OPTION DRIVER	Work angle (β)
H15	-15°
H10	-10°
H05	-5°
000	0
L05	5°
L10	10°
L15	15°
L20	20°
L25	25°
L30	30°
L35	35°
L40	40°
L45	45°
L50	50°

STOCK	ORDER EXAMPLE	Art.	OPTION K-P	OPTION DRIVER	OPTION X
		CRX03.080	P	000	X

OMCR CODE	Stroke (mm)	Overall Dimensions (mm)				
		S	A	B	C	D
CRX03.050	48	42	116	56	200	212
CRX03.080	78	72	146	86	230	242
CRX03.100	98	102	166	106	260	272



ROLLER CAM UNIT - ROLLENSCHIEBER - CAMMA A RULLO

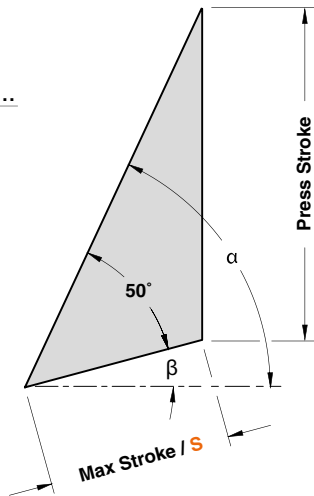
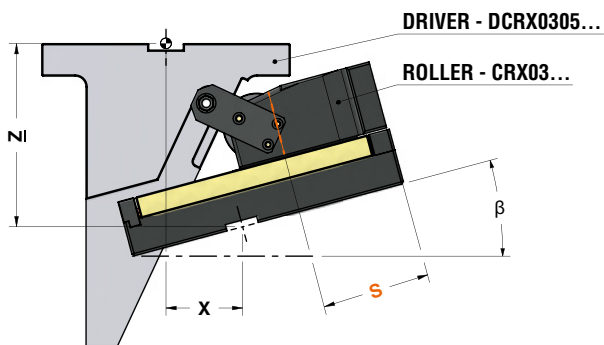


Cam Units CRX

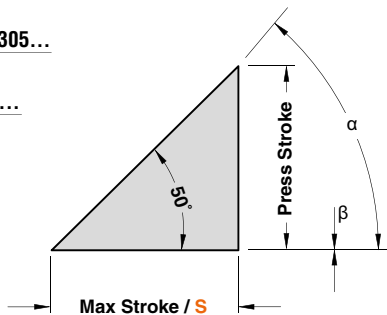
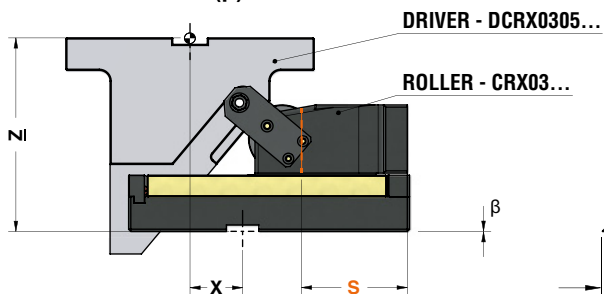


ROLLER CAM UNIT - ROLLENSCHIEBER - CAMMA A RULLO

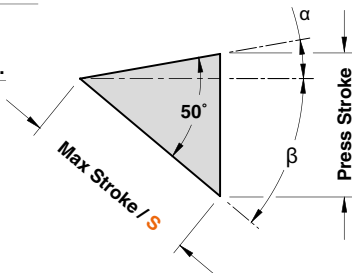
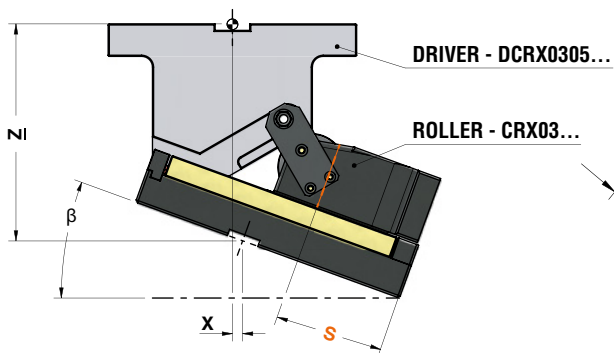
WORK ANGLE (β) FROM -5° TO -15°



WORK ANGLE (β) = 0°



WORK ANGLE (β) FROM 5° TO 50°





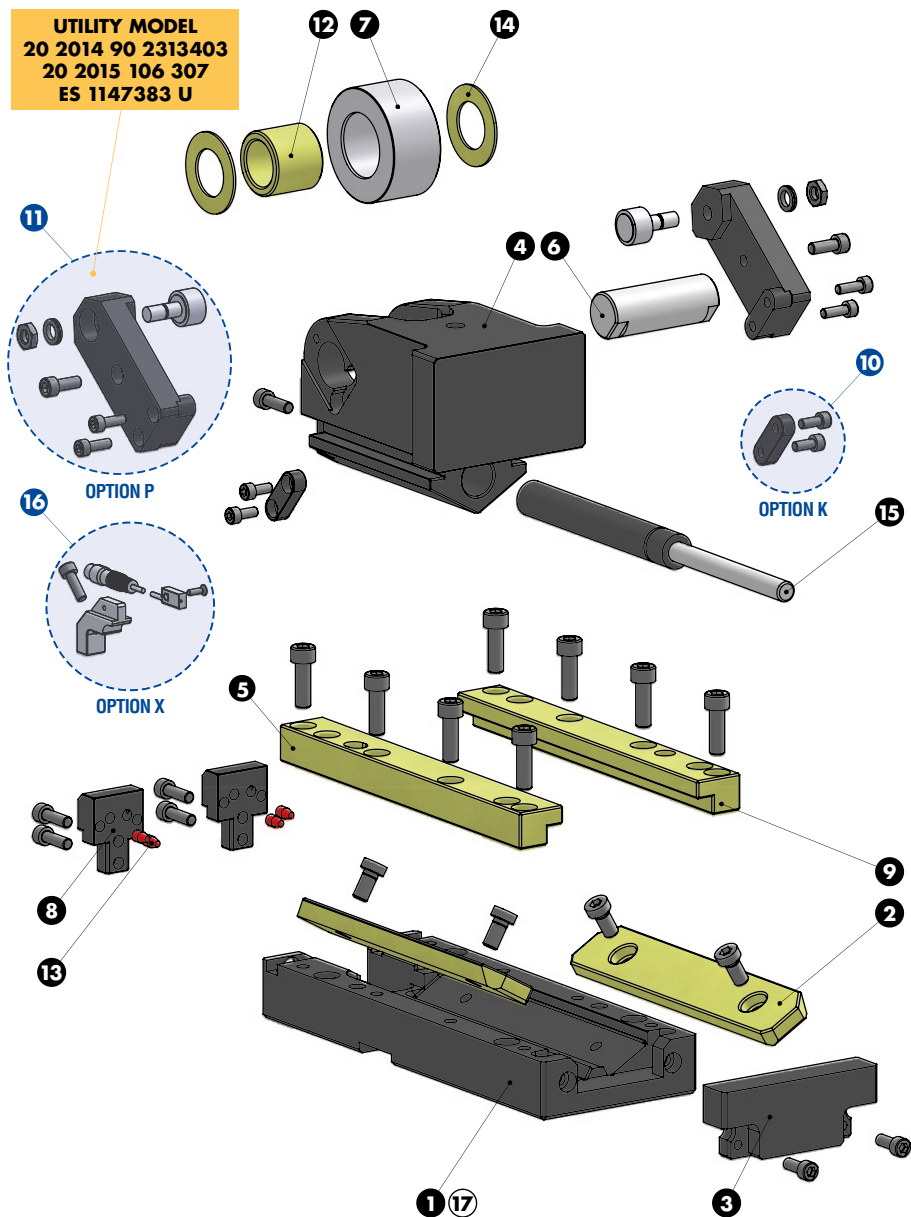
ROLLER CAM UNIT - ROLLENSCHIEBER - CAMMA A RULLO

*For more info see page 866 / Weitere Informationen finden Sie auf der Seite 866 / Per maggiori informazioni consultare la pagina 866

ROLLER CAM CODE	Work Angle β	α	Max Stroke S (mm)	Press Stroke (mm)	*CAM DRIVER CODE	X (mm)	Z (mm)
CRX03.050	-15°	65°	50	87,01	DCRX0305.50.H15	95,92	168,66
	-10°	60°	50	73,54	DCRX0305.50.H10	89,32	171,96
	-5°	55°	50	64,11	DCRX0305.50.H05	81,88	180,63
	0°	50°	50	57,2	DCRX0305.50.000	73,68	186,06
	5°	45°	50	52	DCRX0305.50.L05	64,75	189,06
	10°	40°	50	48	DCRX0305.50.L10	55,19	195,04
	15°	35°	50	44,89	DCRX0305.50.L15	45,05	199,27
	20°	30°	50	42,46	DCRX0305.50.L20	34,42	201,92
	25°	25°	50	40,57	DCRX0305.50.L25	23,37	198,08
	30°	20°	50	39,13	DCRX0305.50.L30	11,99	192,81
	35°	15°	50	38,07	DCRX0305.50.L35	0,37	191,16
	40°	10°	50	37,34	DCRX0305.50.L40	-11,40	188,15
	45°	5°	50	36,91	DCRX0305.50.L45	-23,25	183,81
50°	0°	50	36,77	DCRX0305.50.L50	-35,06	178,15	
CRX03.080	-15°	65°	80	141,38	DCRX0305.80.H15	70,92	209,28
	-10°	60°	80	119,5	DCRX0305.80.H10	64,32	211,00
	-5°	55°	80	104,17	DCRX0305.80.H05	56,88	205,56
	0°	50°	80	92,96	DCRX0305.80.000	48,68	205,30
	5°	45°	80	84,5	DCRX0305.80.L05	39,75	201,56
	10°	40°	80	78	DCRX0305.80.L10	30,19	210,04
	15°	35°	80	72,94	DCRX0305.80.L15	20,05	216,22
	20°	30°	80	69	DCRX0305.80.L20	9,42	220,38
	25°	25°	80	65,93	DCRX0305.80.L25	-1,63	217,72
	30°	20°	80	63,59	DCRX0305.80.L30	-13,01	213,35
	35°	15°	80	61,86	DCRX0305.80.L35	-24,63	202,37
	40°	10°	80	60,67	DCRX0305.80.L40	-36,40	189,82
	45°	5°	80	59,98	DCRX0305.80.L45	-48,25	180,74
50°	0°	80	59,75	DCRX0305.80.L50	-60,06	170,17	
CRX03.100	-15°	65°	100	177,64	DCRX0305.80.H15	70,92	173,03
	-10°	60°	100	150,14	DCRX0305.80.H10	64,32	180,35
	-5°	55°	100	130,88	DCRX0305.80.H05	56,88	178,85
	0°	50°	100	116,79	DCRX0305.80.000	48,68	181,47
	5°	45°	100	106,17	DCRX0305.80.L05	39,75	179,89
	10°	40°	100	98	DCRX0305.80.L10	30,19	191,02
	15°	35°	100	91,65	DCRX0305.80.L15	20,05	197,52
	20°	30°	100	86,69	DCRX0305.80.L20	9,42	202,69
	25°	25°	100	82,83	DCRX0305.80.L25	-1,63	200,81
	30°	20°	100	79,89	DCRX0305.80.L30	-13,01	197,05
	35°	15°	100	77,72	DCRX0305.80.L35	-24,63	186,50
	40°	10°	100	76,23	DCRX0305.80.L40	-36,40	174,26
	45°	5°	100	75,36	DCRX0305.80.L45	-48,25	165,36
50°	0°	100	75,07	DCRX0305.80.L50	-60,06	154,85	

**ROLLER CAM UNIT - ROLLENSCHIEBER - CAMMA A RULLO**

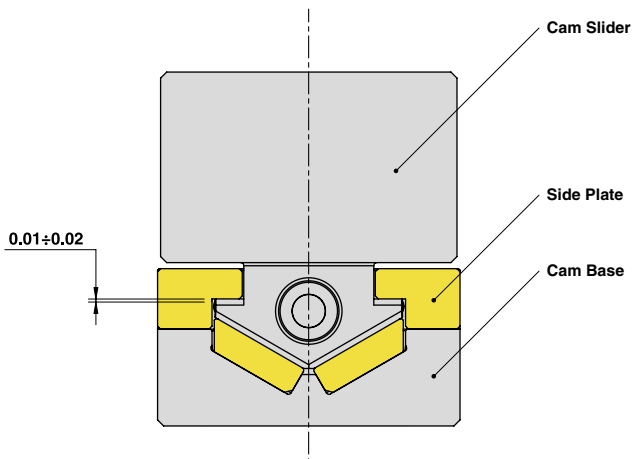
UTILITY MODEL
20 2014 90 2313403
20 2015 106 307
ES 1147383 U





ROLLER CAM UNIT - ROLLENSCHIEBER - CAMMA A RULLO

SLIDER STRUCTURE AND CLEARANCES



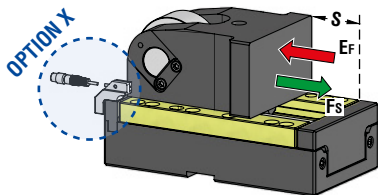
PART LIST

Particular number	Description	Material	Quantity
1	Cam Base	CK45	1
2	Wear Plate	CuZn25Al5 + Graphite - HB > 190	2
3	Spring Stopper Plate	CK45	1
4	Cam Slider	CK45	1
5	Side Plate L	CuZn25Al5 + Graphite - HB > 190	1
6	Pin	16NiCrMo4	1
7	Roller	100Cr6	1
8	Stopper Plate	CK45	2
9	Side Plate R	CuZn25Al5 + Graphite - HB > 190	1
10	Key - OPTION K	CK45	2
11	Positive Return + Roller KRV19PPA - OPTION P	CK45	2
12	Self-Lubricating Bush	CuZn25Al5 + Graphite - HB > 190	1
13	Elastomer Cap	Elastomer 92SH	4
14	Washer PCMW 264401.5M	-	2
15	Gas Spring	-	1
16	Back Position Check - OPTION X	-	1
17	Cam Base Fixing Screws M8x30 DIN 912	-	4



ROLLER CAM UNIT - ROLLENSCHIEBER - CAMMA A RULLO

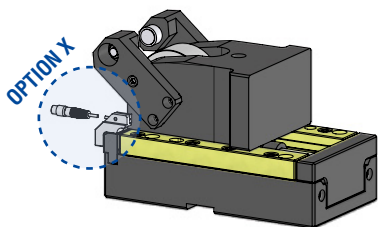
Without Positive Return - OPTION K



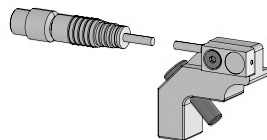
OMCR CODE	Stroke (mm)	Max Work Force (kN)	Extraction Force (kN)	
			Ef	Gas Spring
			S	Fs
CRX05.050	48	142	6,36	
CRX05.080	78	142	6,43	
CRX05.100	98	142	6,46	



With Positive Return - OPTION P

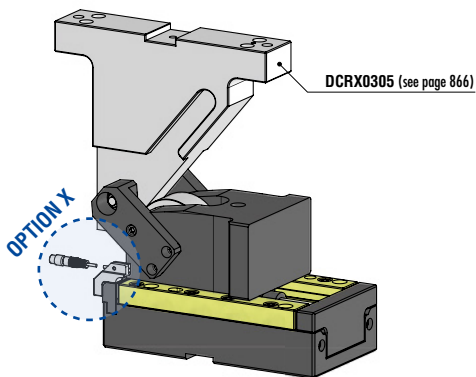


Back Position Check - OPTION X



Montable on right or left side
auf rechte bzw. linke Seite montierbar
Montabile sul lato destro e sinistro

With Driver - OPTION DRIVER



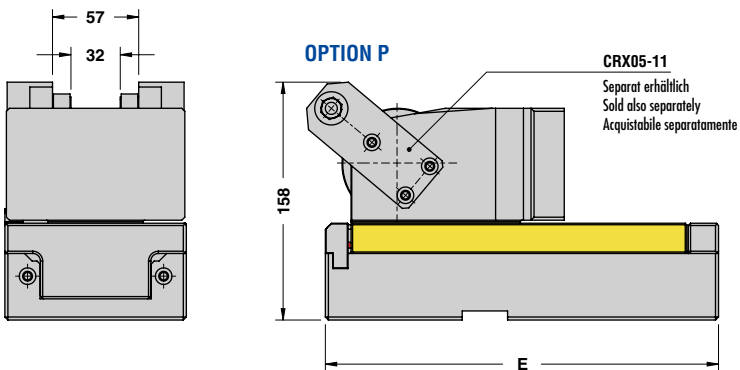
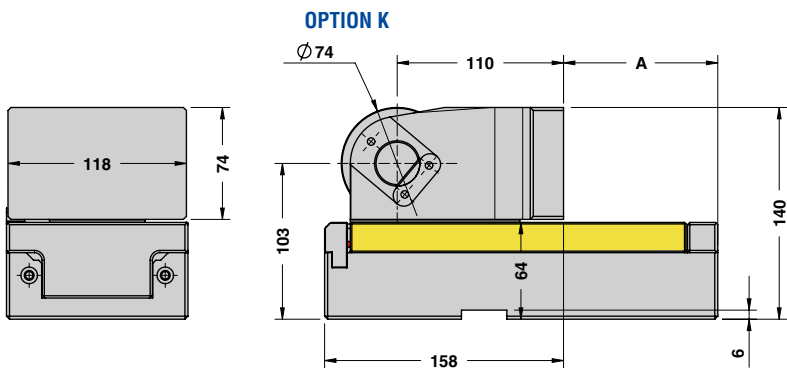
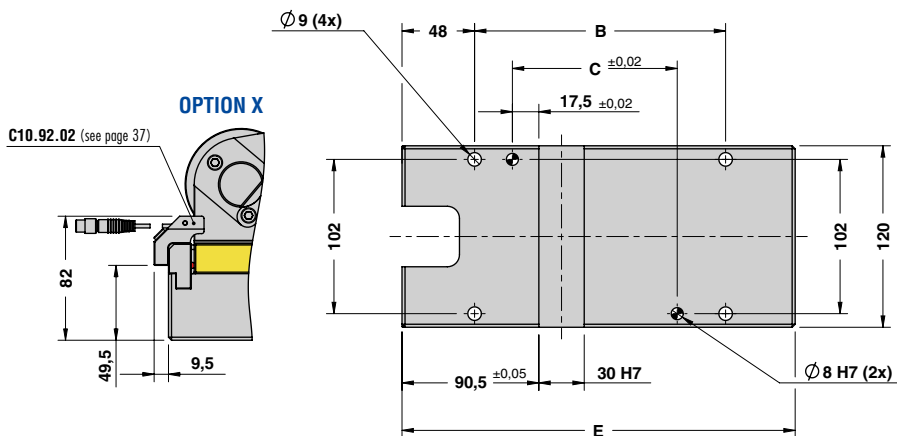
OPTION DRIVER	Work angle (β)
H15	-15°
H10	-10°
H05	-5°
000	0
L05	5°
L10	10°
L15	15°
L20	20°
L25	25°
L30	30°
L35	35°
L40	40°
L45	45°
L50	50°

STOCK	ORDER EXAMPLE	Art.	OPTION K-P	OPTION DRIVER	OPTION X
		CRX05.080	P	000	X

OMCR CODE	Stroke (mm)	Overall Dimensions (mm)				
		S	A	B	C	D
CRX05.050	48	42	116	59	200	213
CRX05.080	78	72	146	89	230	243
CRX05.100	98	102	166	109	260	273



ROLLER CAM UNIT - ROLLENSCHIEBER - CAMMA A RULLO

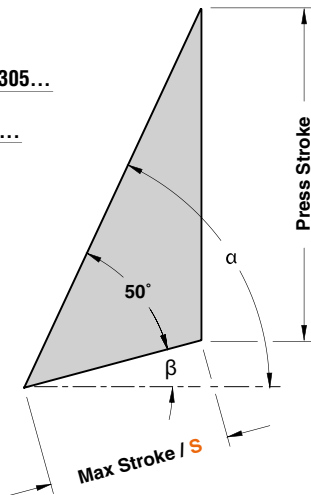
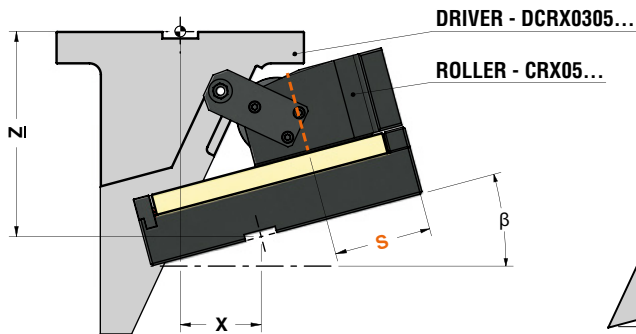


Cam Units CRX

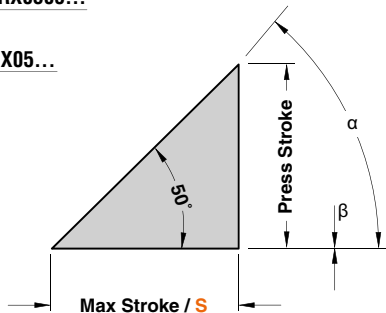
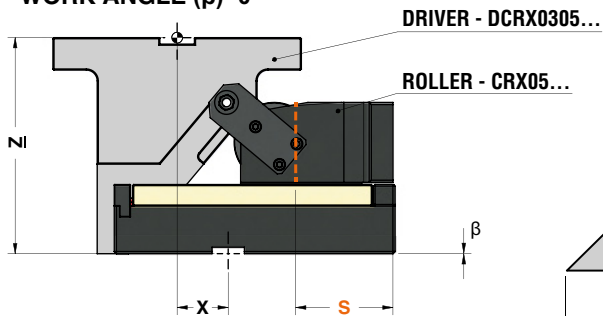


ROLLER CAM UNIT - ROLLENSCHIEBER - CAMMA A RULLO

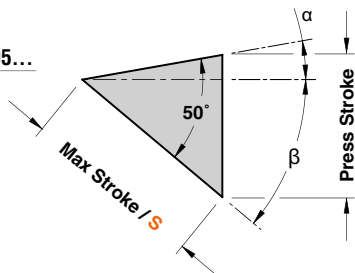
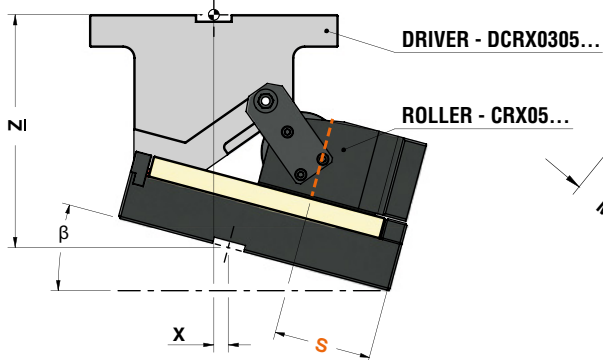
WORK ANGLE (β) FROM -5° TO -15°



WORK ANGLE (β)= 0°



WORK ANGLE (β) FROM 5° TO 50°





ROLLER CAM UNIT - ROLLENSCHIEBER - CAMMA A RULLO

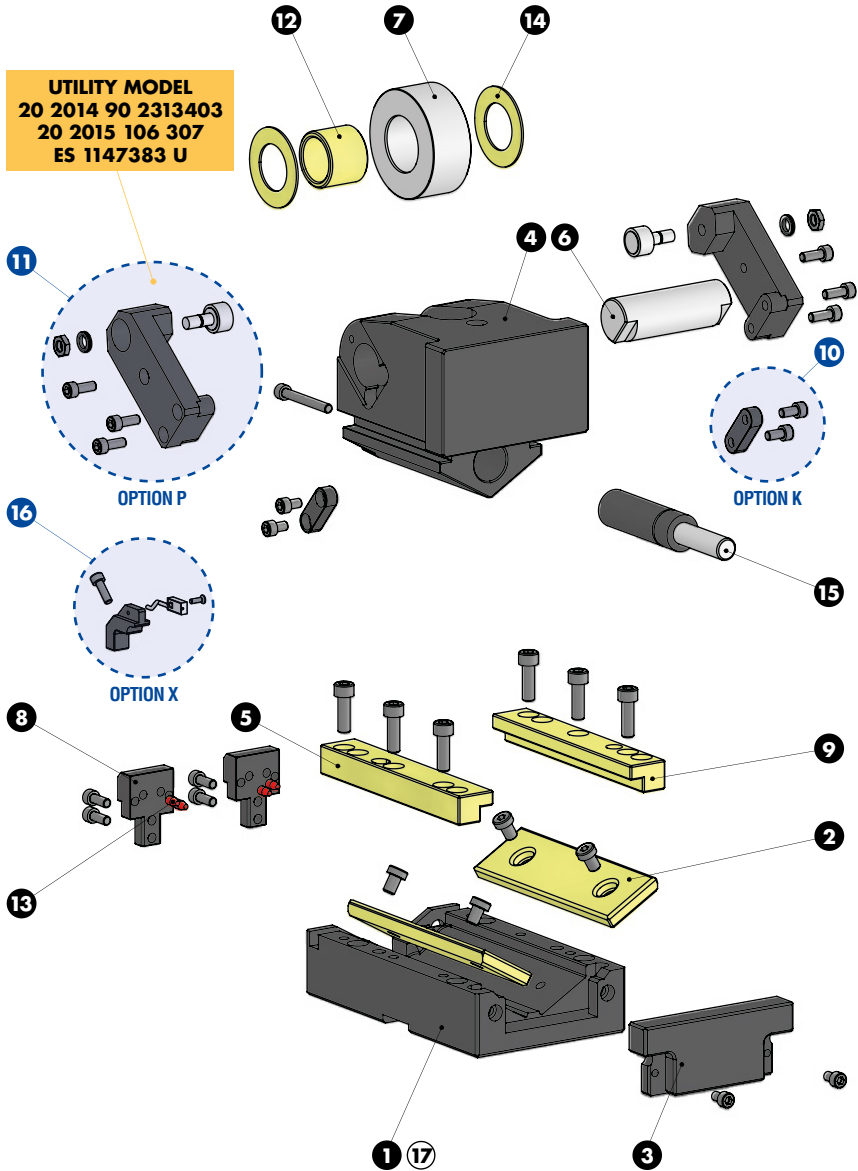
*For more info see page 846 / Weitere Informationen finden Sie auf der Seite 846 / Per maggiori informazioni consultare la pagina 846

ROLLER CAM CODE	Work Angle β	α	Max Stroke S (mm)	Press Stroke (mm)	*CAM DRIVER CODE	X (mm)	Z (mm)
CRX05.050	-15°	65°	50	87,01	DCRX0305.50.H15	99,96	189,49
	-10°	60°	50	73,54	DCRX0305.50.H10	91,56	192,74
	-5°	55°	50	64,11	DCRX0305.50.H05	82,30	201,52
	0°	50°	50	57,2	DCRX0305.50.000	72,27	206,92
	5°	45°	50	52	DCRX0305.50.L05	61,54	209,71
	10°	40°	50	48	DCRX0305.50.L10	50,18	215,34
	15°	35°	50	44,89	DCRX0305.50.L15	38,30	219,05
	20°	30°	50	42,46	DCRX0305.50.L20	25,96	221,04
	25°	25°	50	40,57	DCRX0305.50.L25	13,28	216,39
	30°	20°	50	39,13	DCRX0305.50.L30	0,35	210,42
	35°	15°	50	38,07	DCRX0305.50.L35	-12,74	207,44
	40°	10°	50	37,34	DCRX0305.50.L40	-25,89	203,23
	45°	5°	50	36,91	DCRX0305.50.L45	-38,99	197,57
50°	0°	50	36,77	DCRX0305.50.L50	-51,94	190,48	
CRX05.080	-15°	65°	80	141,38	DCRX0305.80.H15	74,96	229,80
	-10°	60°	80	119,5	DCRX0305.80.H10	66,56	231,78
	-5°	55°	80	104,17	DCRX0305.80.H05	57,30	226,46
	0°	50°	80	92,96	DCRX0305.80.000	47,27	226,17
	5°	45°	80	84,5	DCRX0305.80.L05	36,54	222,21
	10°	40°	80	78	DCRX0305.80.L10	25,18	230,34
	15°	35°	80	72,94	DCRX0305.80.L15	13,30	236,00
	20°	30°	80	69	DCRX0305.80.L20	0,96	239,50
	25°	25°	80	65,93	DCRX0305.80.L25	-11,72	236,03
	30°	20°	80	63,59	DCRX0305.80.L30	-24,65	230,71
	35°	15°	80	61,86	DCRX0305.80.L35	-37,74	218,64
	40°	10°	80	60,67	DCRX0305.80.L40	-50,89	204,89
	45°	5°	80	59,98	DCRX0305.80.L45	-63,99	194,50
50°	0°	80	59,75	DCRX0305.80.L50	-76,94	182,50	
CRX05.100	-15°	65°	100	177,64	DCRX0305.80.H15	74,96	193,54
	-10°	60°	100	150,14	DCRX0305.80.H10	66,56	201,14
	-5°	55°	100	130,88	DCRX0305.80.H05	57,30	199,75
	0°	50°	100	116,79	DCRX0305.80.000	47,27	202,33
	5°	45°	100	106,17	DCRX0305.80.L05	36,54	200,54
	10°	40°	100	98	DCRX0305.80.L10	25,18	210,34
	15°	35°	100	91,65	DCRX0305.80.L15	13,30	217,30
	20°	30°	100	86,69	DCRX0305.80.L20	0,96	221,81
	25°	25°	100	82,83	DCRX0305.80.L25	-11,72	219,13
	30°	20°	100	79,89	DCRX0305.80.L30	-24,65	214,41
	35°	15°	100	77,72	DCRX0305.80.L35	-37,74	202,78
	40°	10°	100	76,23	DCRX0305.80.L40	-50,89	189,33
	45°	5°	100	75,36	DCRX0305.80.L45	-63,99	179,12
50°	0°	100	75,07	DCRX0305.80.L50	-76,94	167,18	



ROLLER CAM UNIT - ROLLENSCHIEBER - CAMMA A RULLO

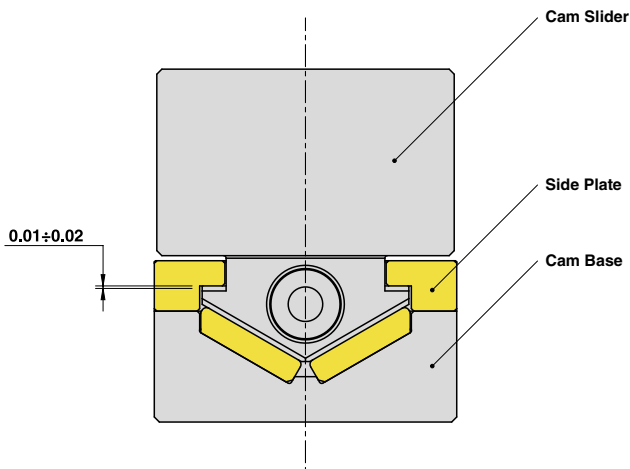
UTILITY MODEL
 20 2014 90 2313403
 20 2015 106 307
 ES 1147383 U





ROLLER CAM UNIT - ROLLENSCHIEBER - CAMMA A RULLO

SLIDER STRUCTURE AND CLEARANCES



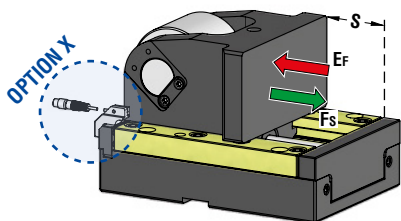
PART LIST

Particular number	Description	Material	Quantity
1	Cam Base	CK45	1
2	Wear Plate	CuZn25Al5 + Graphite - HB > 190	2
3	Spring Stopper Plate	CK45	1
4	Cam Slider	CK45	1
5	Side Plate L	CuZn25Al5 + Graphite - HB > 190	1
6	Pin	16NiCrMo4	1
7	Roller	100Cr6	1
8	Stopper Plate	CK45	2
9	Side Plate R	CuZn25Al5 + Graphite - HB > 190	1
10	Key - OPTION K	CK45	2
11	Positive Return + Roller KRV19PPA - OPTION P	CK45	2
12	Self-Lubricating Bush	CuZn25Al5 + Graphite - HB > 190	1
13	Elastomer Cap	Elastomer 92SH	4
14	Washer PCMW 325401.5M	-	2
15	Gas Spring	-	1
16	Back Position Check - OPTION X	-	1
17	Cam Base Fixing Screws M8x30 DIN 912	-	4

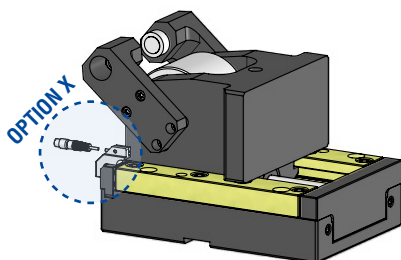


ROLLER CAM UNIT - ROLLENSCHIEBER - CAMMA A RULLO

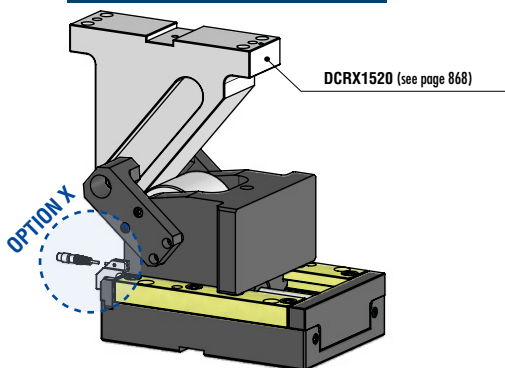
Without Positive Return - OPTION K



With Positive Return - OPTION P



With Driver - OPTION DRIVER



OMCR CODE	Stroke (mm)	Max Work Force (kN)	Extraction Force (kN)	
			Ef	Gas Spring
	S	Fs		
CRX15.050	48	166	6,45	
CRX15.080	78	166	6,57	
CRX15.100	98	166	6,61	

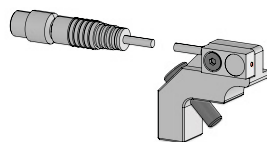


WEB

WEB

P.624

Back Position Check - OPTION X



Montable on right or left side
auf rechte bzw. linke Seite montierbar
Montabile sul lato destro e sinistro

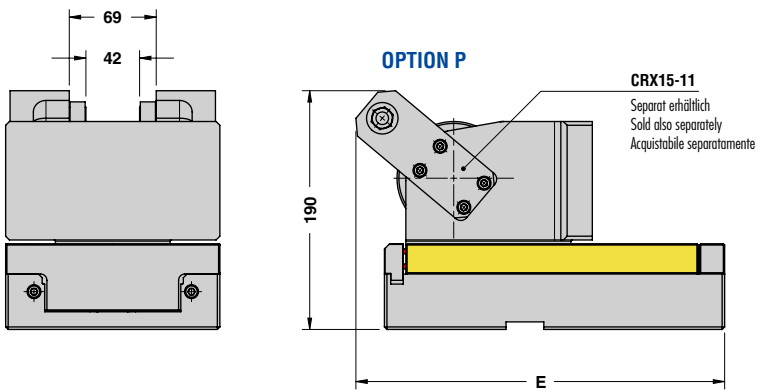
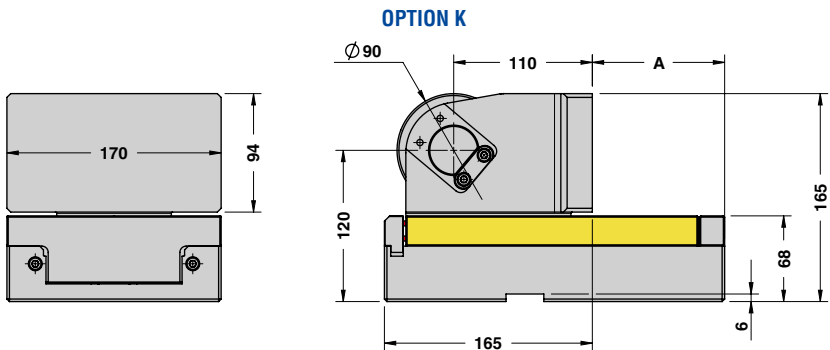
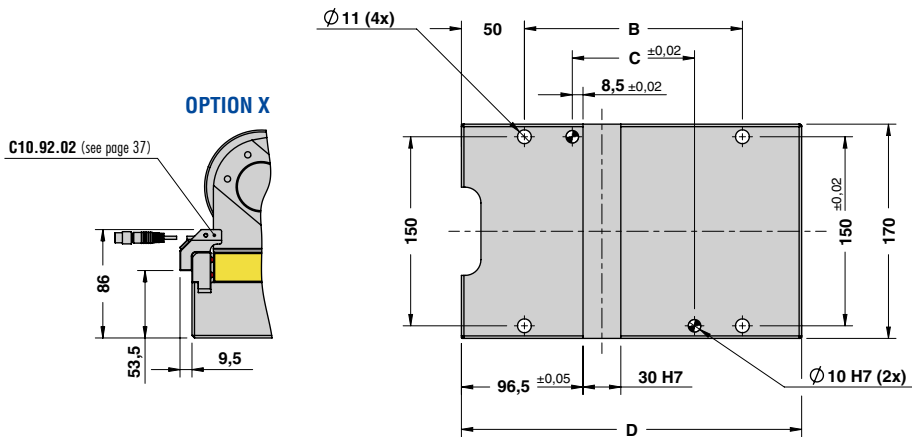
OPTION DRIVER	Work angle (β)
H15	-15°
H10	-10°
H05	-5°
000	0
L05	5°
L10	10°
L15	15°
L20	20°
L25	25°
L30	30°
L35	35°
L40	40°
L45	45°
L50	50°

STOCK	ORDER EXAMPLE	Art.	Stroke = 80	OPTION K-P	OPTION DRIVER	OPTION X
		CRX15	080	P	000	X

OMCR CODE	Stroke (mm)	Overall Dimensions (mm)				
		S	A	B	C	D
CRX15.050	48	55	123	47	220	243
CRX15.080	78	85	153	77	250	273
CRX15.100	98	105	173	97	270	293



ROLLER CAM UNIT - ROLLENSCHIEBER - CAMMA A RULLO



Cam Units CRX

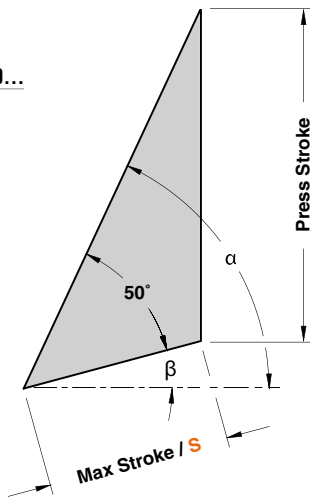
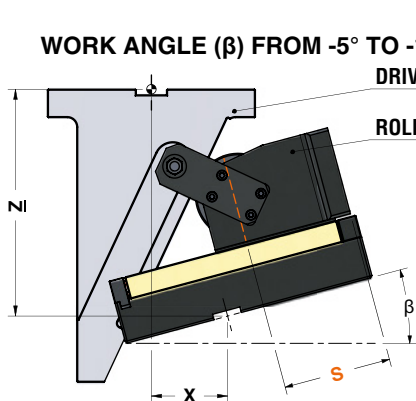


ROLLER CAM UNIT - ROLLENSCHIEBER - CAMMA A RULLO

WORK ANGLE (β) FROM -5° TO -15°

DRIVER - DCRX1520...

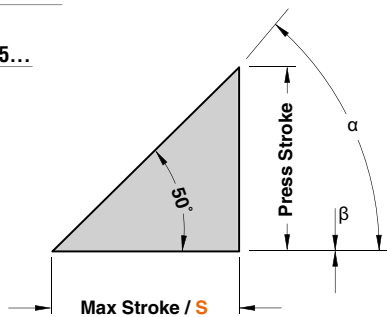
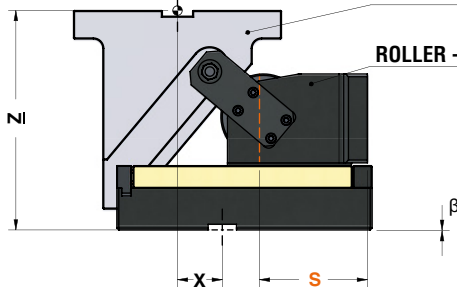
ROLLER - CRX15...



WORK ANGLE (β) = 0°

DRIVER - DCRX1520...

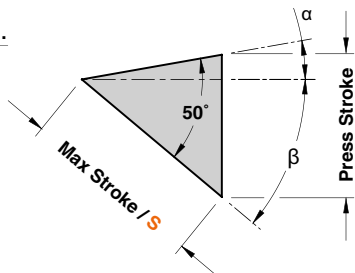
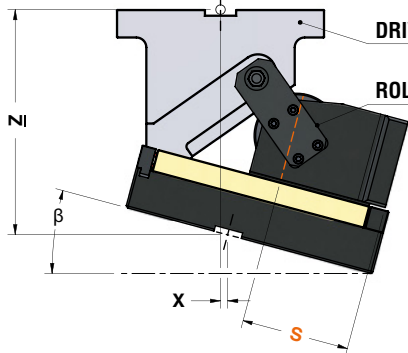
ROLLER - CRX15...



WORK ANGLE (β) FROM 5° TO 50°

DRIVER - DCRX1520...

ROLLER - CRX15...





ROLLER CAM UNIT - ROLLENSCHIEBER - CAMMA A RULLO

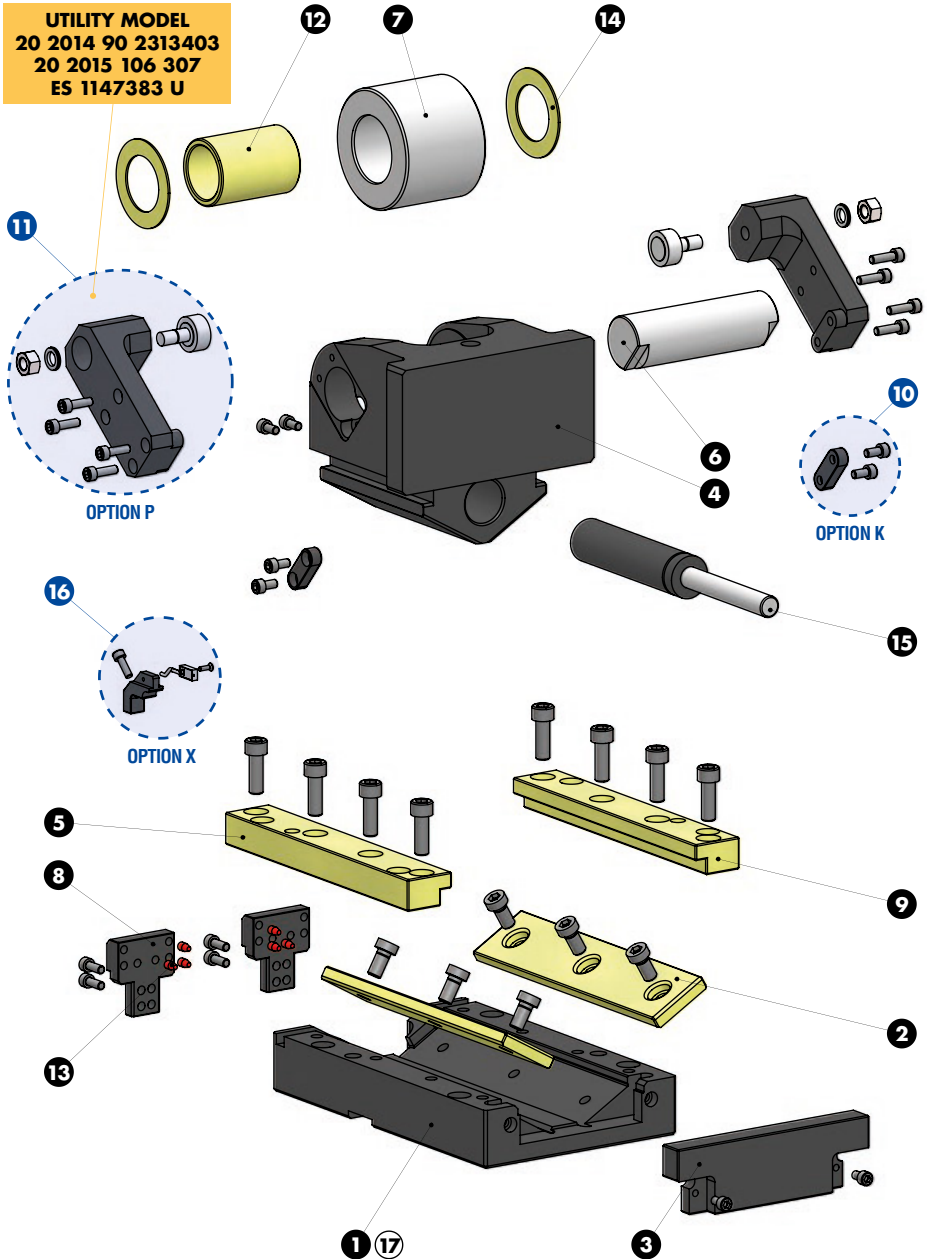
*For more info see page 868 / Weitere Informationen finden Sie auf der Seite 868 / Per maggiori informazioni consultare la pagina 868

ROLLER CAM CODE	Work Angle β	α	Max Stroke S (mm)	Press Stroke (mm)	*CAM DRIVER CODE	X (mm)	Z (mm)
CRX15.050	-15°	65°	50	87,01	DCRX1520.50.H15	105,64	224,24
	-10°	60°	50	73,54	DCRX1520.50.H10	95,45	223,67
	-5°	55°	50	64,11	DCRX1520.50.H05	84,34	223,13
	0°	50°	50	57,2	DCRX1520.50.000	72,39	229,07
	5°	45°	50	52	DCRX1520.50.L05	59,71	232,76
	10°	40°	50	48	DCRX1520.50.L10	46,38	238,04
	15°	35°	50	44,89	DCRX1520.50.L15	32,51	241,78
	20°	30°	50	42,46	DCRX1520.50.L20	18,21	243,60
	25°	25°	50	40,57	DCRX1520.50.L25	3,57	238,62
	30°	20°	50	39,13	DCRX1520.50.L30	-11,28	231,91
	35°	15°	50	38,07	DCRX1520.50.L35	-26,24	228,52
	40°	10°	50	37,34	DCRX1520.50.L40	-41,19	223,49
	45°	5°	50	36,91	DCRX1520.50.L45	-56,01	216,85
50°	0°	50	36,77	DCRX1520.50.L50	-95,60	208,65	
CRX15.080	-15°	65°	80	141,38	DCRX1520.80.H15	80,64	279,87
	-10°	60°	80	119,5	DCRX1520.80.H10	70,45	262,70
	-5°	55°	80	104,17	DCRX1520.80.H05	59,34	258,07
	0°	50°	80	92,96	DCRX1520.80.000	47,39	258,32
	5°	45°	80	84,5	DCRX1520.80.L05	34,71	249,72
	10°	40°	80	78	DCRX1520.80.L10	21,38	258,04
	15°	35°	80	72,94	DCRX1520.80.L15	7,51	258,72
	20°	30°	80	69	DCRX1520.80.L20	-6,78	262,06
	25°	25°	80	65,93	DCRX1520.80.L25	-21,42	253,26
	30°	20°	80	63,59	DCRX1520.80.L30	-36,28	252,45
	35°	15°	80	61,86	DCRX1520.80.L35	-51,24	234,72
	40°	10°	80	60,67	DCRX1520.80.L40	-66,19	225,15
	45°	5°	80	59,98	DCRX1520.80.L45	-81,01	213,78
50°	0°	80	59,75	DCRX1520.80.L50	-95,60	200,66	
CRX15.100	-15°	65°	100	177,64	DCRX1520.80.H15	80,64	243,61
	-10°	60°	100	150,14	DCRX1520.80.H10	70,45	232,06
	-5°	55°	100	130,88	DCRX1520.80.H05	59,34	231,36
	0°	50°	100	116,79	DCRX1520.80.000	47,39	234,48
	5°	45°	100	106,17	DCRX1520.80.L05	34,71	228,06
	10°	40°	100	98	DCRX1520.80.L10	21,38	238,04
	15°	35°	100	91,65	DCRX1520.80.L15	7,51	240,02
	20°	30°	100	86,69	DCRX1520.80.L20	-6,78	244,37
	25°	25°	100	82,83	DCRX1520.80.L25	-21,42	236,36
	30°	20°	100	79,89	DCRX1520.80.L30	-36,28	236,15
	35°	15°	100	77,72	DCRX1520.50.L35	-51,24	218,86
	40°	10°	100	76,23	DCRX1520.80.L40	-66,19	209,59
	45°	5°	100	75,36	DCRX1520.80.L45	-81,01	198,40
50°	0°	100	75,07	DCRX1520.80.L50	-95,60	185,34	



ROLLER CAM UNIT - ROLLENSCHIEBER - CAMMA A RULLO

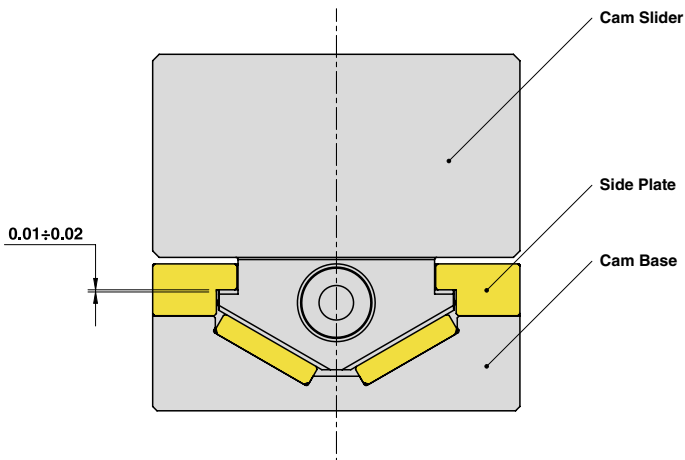
UTILITY MODEL
 20 2014 90 2313403
 20 2015 106 307
 ES 1147383 U





ROLLER CAM UNIT - ROLLENSCHIEBER - CAMMA A RULLO

SLIDER STRUCTURE AND CLEARANCES



Cam Units CRX

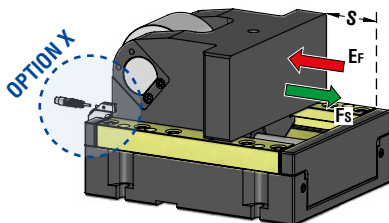
PART LIST

Particular number	Description	Material	Quantity
1	Cam Base	CK45	1
2	Wear Plate	CuZn25Al5 + Graphite - HB > 190	2
3	Gas Spring Stopper Plate	CK45	1
4	Cam Slider	CK45	1
5	Side Plate L	CuZn25Al5 + Graphite - HB > 190	1
6	Pin	16NiCrMo4	1
7	Roller	100Cr6	1
8	Stopper Plate	CK45	2
9	Side Plate R	CuZn25Al5 + Graphite - HB > 190	1
10	Key - OPTION K	CK45	2
11	Positive Return + Roller KRV26PPA - OPTION P	CK45	2
12	Self-Lubricating Bush	CuZn25Al5 + Graphite - HB > 190	1
13	Elastomer Cap	Elastomer 92SH	6
14	Washer PCMW 426601.5M	-	2
15	Gas Spring	-	1
16	Back Position Check - OPTION X	-	1
17	Cam Base Fixing Screws M10x35 DIN 912	-	4

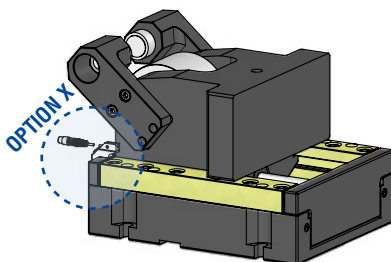


ROLLER CAM UNIT - ROLLENSCHIEBER - CAMMA A RULLO

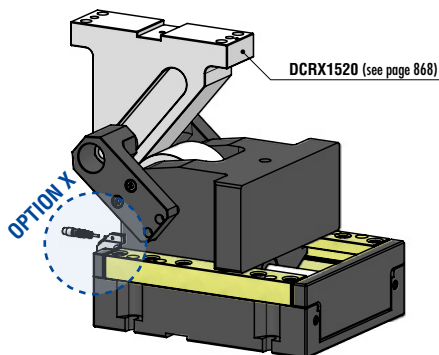
Without Positive Return - OPTION K



With Positive Return - OPTION P



With Driver - OPTION DRIVER



OMCR CODE	Stroke (mm)	Max Work Force (kN)	Extraction Force (kN)	
			Ef	Gas Spring
	S	Fs		
CRX20.050	48	258	9,29	
CRX20.080	78	258	9,36	
CRX20.100	98	258	9,38	



WEB

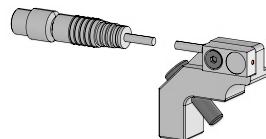


WEB



P.624

Back Position Check - OPTION X



Montable on right or left side
auf rechte bzw. linke Seite montierbar
Montabile sul lato destro e sinistro

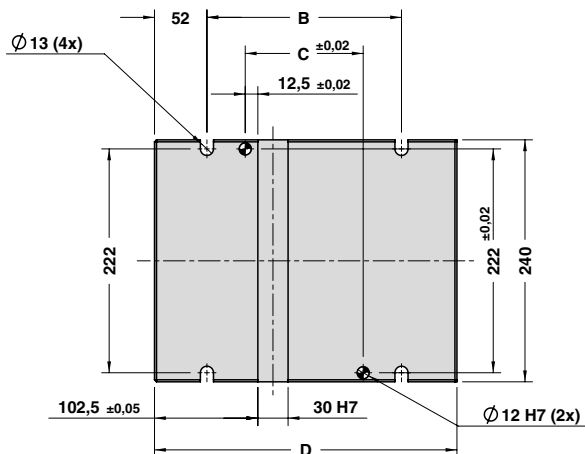
OPTION DRIVER	Work angle (β)
H15	-15°
H10	-10°
H05	-5°
000	0
L05	5°
L10	10°
L15	15°
L20	20°
L25	25°
L30	30°
L35	35°
L40	40°
L45	45°
L50	50°

STOCK	ORDER EXAMPLE	Art.	Stroke = 80	OPTION K-P	OPTION DRIVER	OPTION X
		CRX20	080	P	000	X

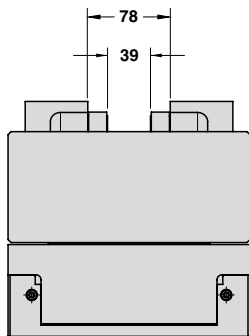
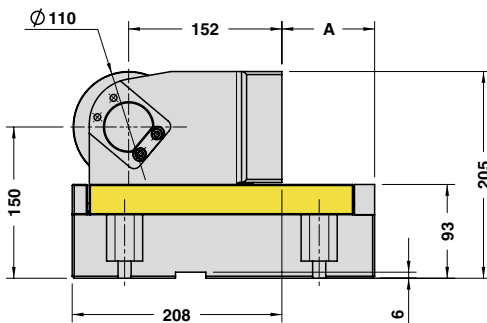
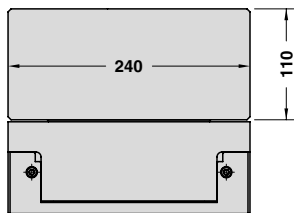
OMCR CODE	Stroke (mm)	Overall Dimensions (mm)				
		S	A	B	C	D
CRX20.050	48	42	143	67	250	290
CRX20.080	78	72	173	97	280	320
CRX20.100	98	92	193	117	300	340



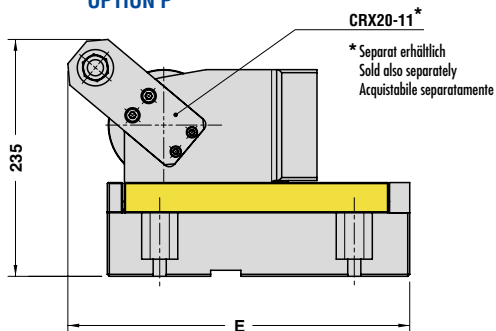
ROLLER CAM UNIT - ROLLENSCHIEBER - CAMMA A RULLO



OPTION K

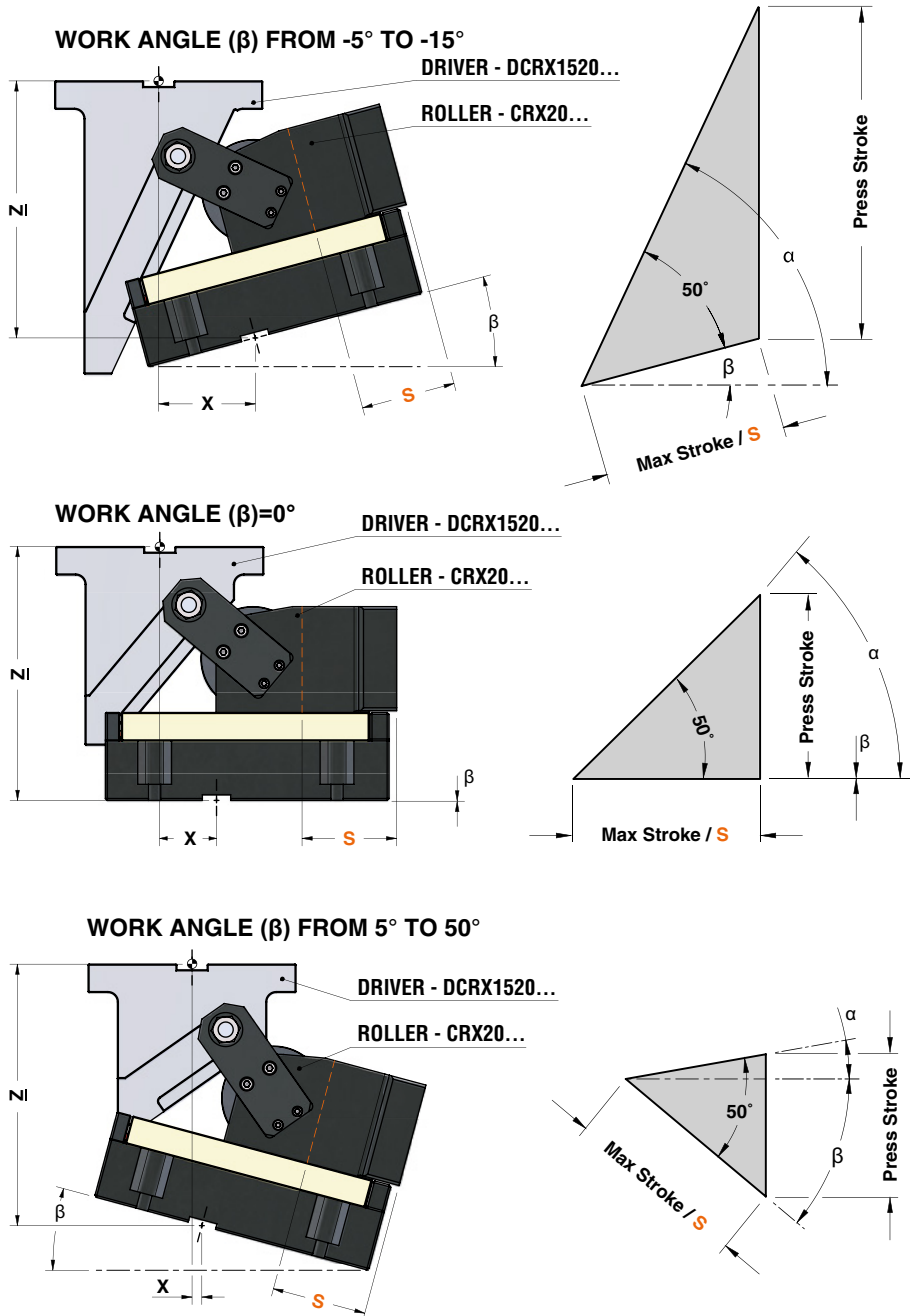


OPTION P



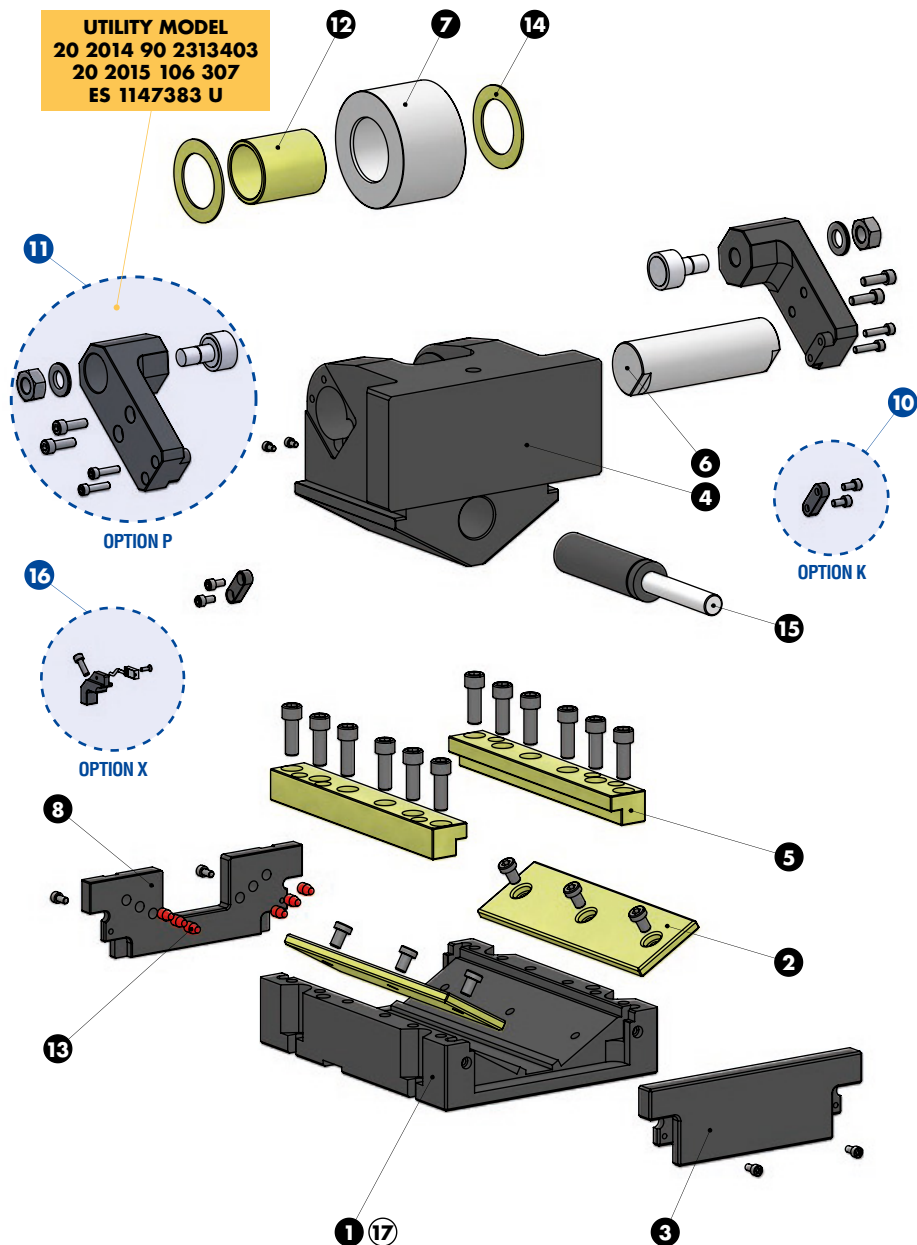


ROLLER CAM UNIT - ROLLENSCHIEBER - CAMMA A RULLO




ROLLER CAM UNIT - ROLLENSCHIEBER - CAMMA A RULLO

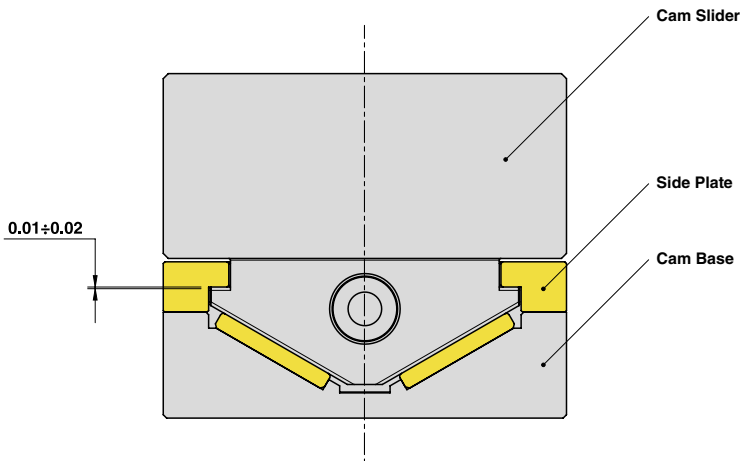
ROLLER CAM CODE	Work Angle β	α	Max Stroke S (mm)	Press Stroke (mm)	*CAM DRIVER CODE	X (mm)	Z (mm)
CRX20.050	-15°	65°	50	87,01	DCRX1520.50.H15	127,30	256,15
	-10°	60°	50	73,54	DCRX1520.50.H10	114,24	257,35
	-5°	55°	50	64,11	DCRX1520.50.H05	100,12	258,33
	0°	50°	50	57,2	DCRX1520.50.000	85,06	265,49
	5°	45°	50	52	DCRX1520.50.L05	69,15	269,61
	10°	40°	50	48	DCRX1520.50.L10	52,53	276,11
	15°	35°	50	44,89	DCRX1520.50.L15	35,31	280,24
	20°	30°	50	42,46	DCRX1520.50.L20	17,64	282,17
	25°	25°	50	40,57	DCRX1520.50.L25	-0,34	276,67
	30°	20°	50	39,13	DCRX1520.50.L30	-18,53	269,79
	35°	15°	50	38,07	DCRX1520.50.L35	-36,76	265,62
	40°	10°	50	37,34	DCRX1520.50.L40	-54,90	259,53
45°	5°	50	36,91	DCRX1520.50.L45	-72,82	251,56	
50°	0°	50	36,77	DCRX1520.50.L50	-90,37	241,76	
CRX20.080	-15°	65°	80	141,38	DCRX1520.80.H15	102,30	311,77
	-10°	60°	80	119,5	DCRX1520.80.H10	89,24	296,39
	-5°	55°	80	104,17	DCRX1520.80.H05	75,13	293,25
	0°	50°	80	92,96	DCRX1520.80.000	60,06	294,74
	5°	45°	80	84,5	DCRX1520.80.L05	44,15	287,11
	10°	40°	80	78	DCRX1520.80.L10	27,53	296,11
	15°	35°	80	72,94	DCRX1520.80.L15	10,32	297,18
	20°	30°	80	69	DCRX1520.80.L20	-7,35	300,62
	25°	25°	80	65,93	DCRX1520.80.L25	-25,35	291,63
	30°	20°	80	63,59	DCRX1520.80.L30	-43,53	290,33
	35°	15°	80	61,86	DCRX1520.80.L35	-61,76	271,83
	40°	10°	80	60,67	DCRX1520.80.L40	-79,91	261,19
45°	5°	80	59,98	DCRX1520.80.L45	-97,82	248,49	
50°	0°	80	59,75	DCRX1520.80.L50	-115,38	233,78	
CRX20.100	-15°	65°	100	177,64	DCRX1520.80.H15	102,30	275,52
	-10°	60°	100	150,14	DCRX1520.80.H10	89,24	265,74
	-5°	55°	100	130,88	DCRX1520.80.H05	75,12	266,55
	0°	50°	100	116,79	DCRX1520.80.000	60,06	270,90
	5°	45°	100	106,17	DCRX1520.80.L05	44,15	265,45
	10°	40°	100	98	DCRX1520.80.L10	27,53	276,11
	15°	35°	100	91,65	DCRX1520.80.L15	10,31	278,48
	20°	30°	100	86,69	DCRX1520.80.L20	-7,35	282,93
	25°	25°	100	82,83	DCRX1520.80.L25	-25,34	274,72
	30°	20°	100	79,89	DCRX1520.80.L30	-43,53	273,84
	35°	15°	100	77,72	DCRX1520.80.L35	-61,76	255,96
	40°	10°	100	76,23	DCRX1520.80.L40	-79,90	245,69
45°	5°	100	75,36	DCRX1520.80.L45	-97,82	233,11	
50°	0°	100	75,07	DCRX1520.80.L50	-115,37	218,46	

**ROLLER CAM UNIT - ROLLENSCHIEBER - CAMMA A RULLO**



ROLLER CAM UNIT - ROLLENSCHIEBER - CAMMA A RULLO

SLIDER STRUCTURE AND CLEARANCES

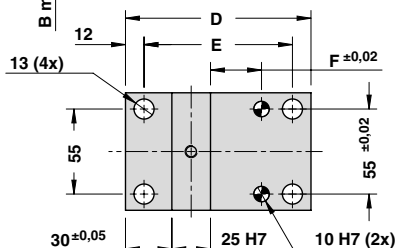
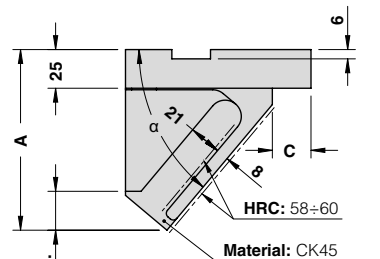
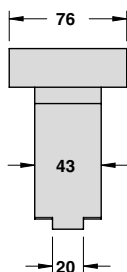
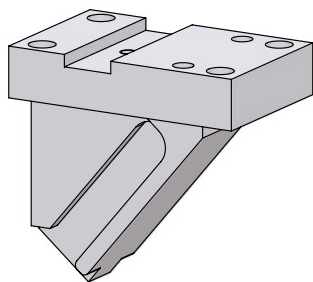


PART LIST

Particular number	Description	Material	Quantity
1	Cam Base	CK45	1
2	Wear Plate	CuZn25Al5 + Graphite - HB > 190	2
3	Gas Spring Stopper Plate	CK45	1
4	Cam Slider	CK45	1
5	Side Plate	CuZn25Al5 + Graphite - HB > 190	2
6	Pin	16NiCrMo4	1
7	Roller	100Cr6	1
8	Stopper Plate	CK45	1
10	Key - OPTION K	CK45	2
11	Positive Return + Roller KRV35PPA - OPTION P	CK45	2
12	Self-Lubricating Bush	CuZn25Al5 + Graphite - HB > 190	1
13	Elastomer Cap	Elastomer 92SH	6
14	Washer PCMW 52780.2M	-	2
15	Gas Spring	-	1
16	Back Position Check - OPTION X	-	1
17	Cam Base Fixing Screws M12x35 DIN 912	-	4



ROLLER CAM DRIVER - TREIBER FÜR ROLLENSCHIEBER - CUNEO PER CAMME A RULLO



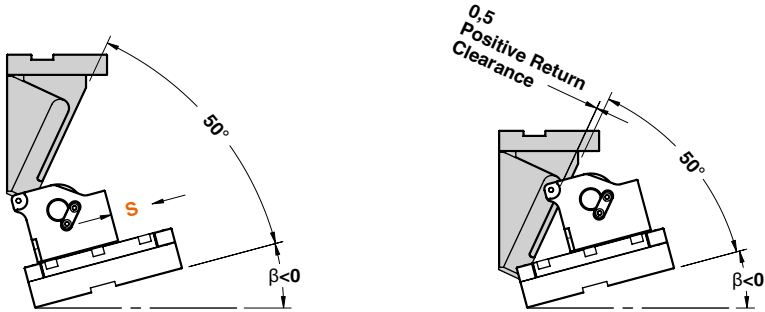
For driver positioning see pages 836-837
 Positionierung des Treibers siehe Seiten 836-837
 Per posizionamento cuneo vedi pagine 836-837

STOCK		Art.	Work angle = 0°
		DCRX0100.30	000

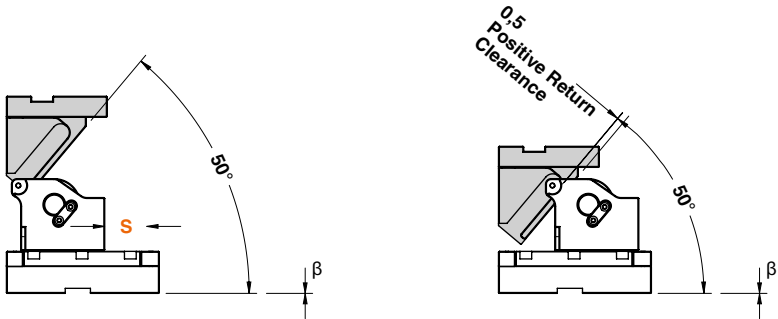
OMCR CODE	ROLLER CAM MODEL	Stroke (mm)	Work Angle	Overall Dimensions (mm)						
		S	β	α	A	B min.	C	D	E	F
DCRX0100.30.H15	CRX01.030	30	-15°	65°	131	18	30	100	76	13
DCRX0100.30.H10		30	-10°	60°	113,5	20,5	30	100	76	13
DCRX0100.30.H05		30	-5°	55°	97	22,5	30	100	76	13
DCRX0100.30.000		30	0°	50°	92,5	24,5	30	100	76	13
DCRX0100.30.L05		30	5°	45°	82	26,5	30	100	76	13
DCRX0100.30.L10		30	10°	40°	78,5	28	30	100	76	13
DCRX0100.30.L15		30	15°	35°	75,5	29,5	30	100	76	13
DCRX0100.30.L20		30	20°	30°	74	31	30	100	76	13
DCRX0100.30.L25		30	25°	25°	70,5	34,5	30	100	76	13
DCRX0100.30.L30		30	30°	20°	70	33	30	100	76	13
DCRX0100.30.L35		30	35°	15°	69	32	30	100	76	13
DCRX0100.30.L40		30	40°	10°	65	32	30	100	76	13
DCRX0100.30.L45		30	45°	5°	62	30,5	30	100	76	13
DCRX0100.30.L50		30	50°	0°	59,5	29	30	100	76	13
DCRX0100.50.H15		CRX01.050	48	-15°	65°	179	16	25	120	96
DCRX0100.50.H10	48		-10°	60°	153,5	20,5	25	120	96	33
DCRX0100.50.H05	48		-5°	55°	142	22,5	25	120	96	33
DCRX0100.50.000	48		0°	50°	116	24,5	25	120	96	33
DCRX0100.50.L05	48		5°	45°	111	26,5	25	120	96	33
DCRX0100.50.L10	48		10°	40°	101,5	31	25	120	96	33
DCRX0100.50.L15	48		15°	35°	99	33	25	120	96	33
DCRX0100.50.L20	48		20°	30°	93	33	25	120	96	33
DCRX0100.50.L25	48		25°	25°	87,5	30,5	25	120	96	33
DCRX0100.50.L30	48		30°	20°	83	29,5	25	120	96	33
DCRX0100.50.L35	48		35°	15°	84	30,5	25	120	96	33
DCRX0100.50.L40	48		40°	10°	75	31	25	120	96	33
DCRX0100.50.L45	48		45°	5°	72	31,5	25	120	96	33
DCRX0100.50.L50	48		50°	0°	69,5	29	25	120	96	33



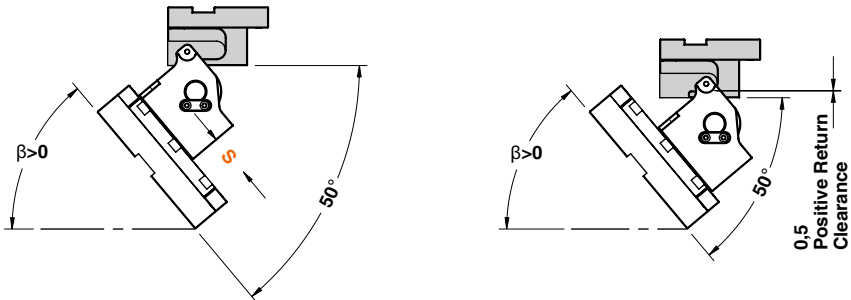
FUNCTIONING EXAMPLE FOR WORK ANGLE (β) FROM -5° TO -15°



FUNCTIONING EXAMPLE FOR WORK ANGLE (β)=0°



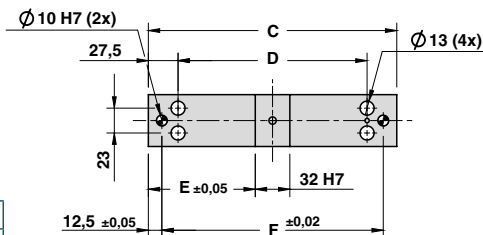
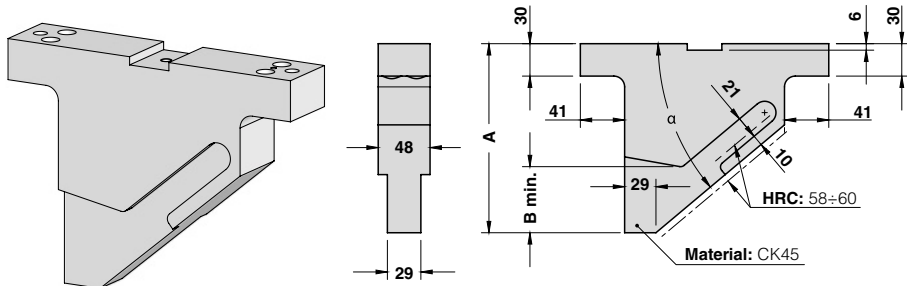
FUNCTIONING EXAMPLE FOR WORK ANGLE (β) FROM 5° TO 50°



Cam Units CRX



ROLLER CAM DRIVER - TREIBER FÜR ROLLENSCHIEBER - CUNEO PER CAMME A RULLO



For driver positioning see pages 842-843 and 848-849
 Positionierung des Treibers siehe Seiten 842-843 und 848-849
 Per posizionamento cuneo vedi pagine 842-843 e 848-849

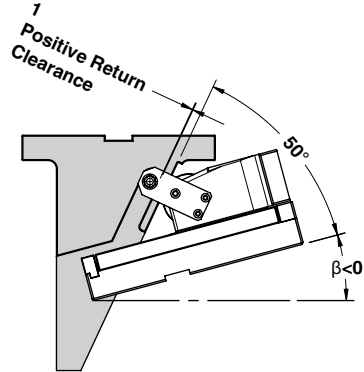
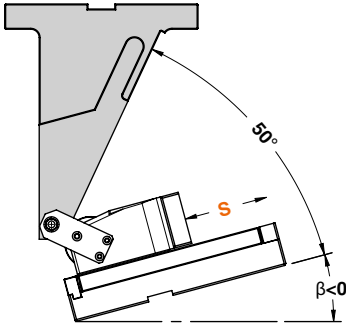
STOCK	ORDER EXAMPLE	Art.	Work angle = 0°
		DCRX0305.50	000

OMCR CODE	ROLLER CAM MODEL	Stroke (mm)	Work Angle	Overall Dimensions (mm)						
		S	β	α	A	B min.	C	D	E	F
DCRX0305.50.H15	CRX03.050 CRX05.050	48	-15°	65°	185	70	180	125	74	155
DCRX0305.50.H10		48	-10°	60°	165	70	180	125	74	155
DCRX0305.50.H05		48	-5°	55°	155	60	180	125	74	155
DCRX0305.50.000		48	0°	50°	145	50	180	125	74	155
DCRX0305.50.L05		48	5°	45°	135	40	180	125	74	155
DCRX0305.50.L10		48	10°	40°	130	35	180	125	74	155
DCRX0305.50.L15		48	15°	35°	125	30	180	125	74	155
DCRX0305.50.L20		48	20°	30°	120	25	180	125	74	155
DCRX0305.50.L25		48	25°	25°	110	40	180	125	74	155
DCRX0305.50.L30		48	30°	20°	100	30	180	125	74	155
DCRX0305.50.L35		48	35°	15°	95	25	180	125	74	155
DCRX0305.50.L40		48	40°	10°	90	20	180	125	74	155
DCRX0305.50.L45		48	45°	5°	85	25	180	125	74	155
DCRX0305.50.L50		48	50°	0°	80	30	180	125	74	155
DCRX0305.80.H15		CRX03.080 CRX03.100 CRX05.080 CRX05.100	78-98	-15°	65°	280	160	230	175	99
DCRX0305.80.H10	78-98		-10°	60°	250	130	230	175	99	205
DCRX0305.80.H05	78-98		-5°	55°	220	100	230	175	99	205
DCRX0305.80.000	78-98		0°	50°	200	80	230	175	99	205
DCRX0305.80.L05	78-98		5°	45°	180	60	230	175	99	205
DCRX0305.80.L10	78-98		10°	40°	175	55	230	175	99	205
DCRX0305.80.L15	78-98		15°	35°	170	50	230	175	99	205
DCRX0305.80.L20	78-98		20°	30°	165	45	230	175	99	205
DCRX0305.80.L25	78-98		25°	25°	155	65	230	175	99	205
DCRX0305.80.L30	78-98		30°	20°	145	55	230	175	99	205
DCRX0305.80.L35	78-98		35°	15°	130	50	230	175	99	205
DCRX0305.80.L40	78-98		40°	10°	115	55	230	175	99	205
DCRX0305.80.L45	78-98		45°	5°	105	45	230	175	99	205
DCRX0305.80.L50	78-98		50°	0°	95	55	230	175	99	205

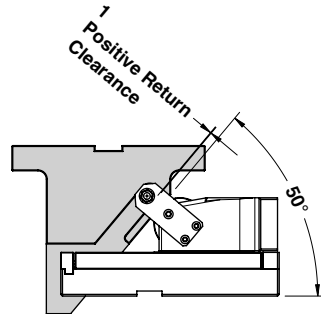
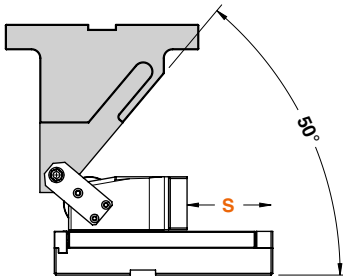


ROLLER CAM DRIVER - TREIBER FÜR ROLLENSCHIEBER - CUNEO PER CAMME A RULLO

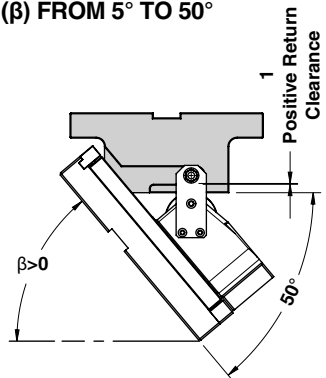
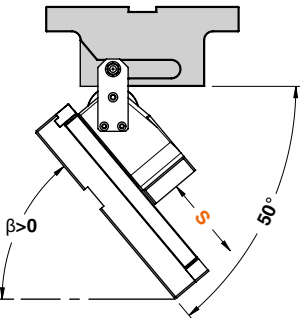
FUNCTIONING EXAMPLE FOR WORK ANGLE (β) FROM -5° TO -15°



FUNCTIONING EXAMPLE FOR WORK ANGLE (β)=0°



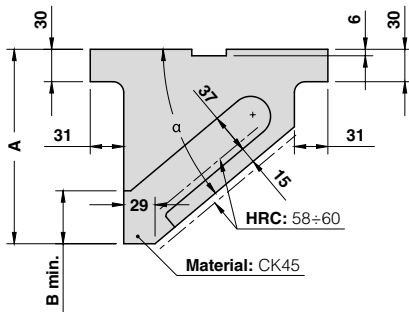
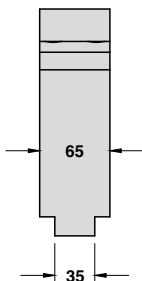
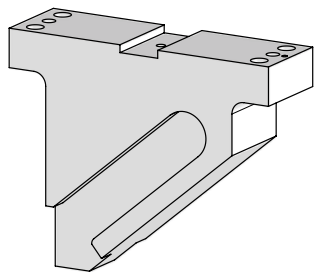
FUNCTIONING EXAMPLE FOR WORK ANGLE (β) FROM 5° TO 50°



Cam Units CRX

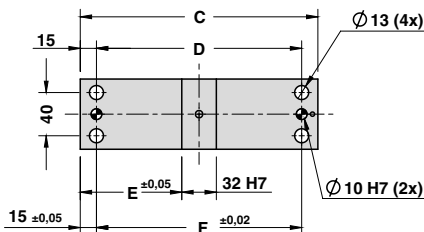


ROLLER CAM DRIVER - TREIBER FÜR ROLLENSCHIEBER - CUNEO PER CAMME A RULLO



For driver positioning see pages 854-855 and 860-861
 Positionierung des Treibers siehe Seiten 854-855 und 860-861
 Per posizionamento cuneo vedi pagine 854-855 e 860-861

STOCK	ORDER EXAMPLE	Art.	Work angle = 0°
		DCRX1520.50	000

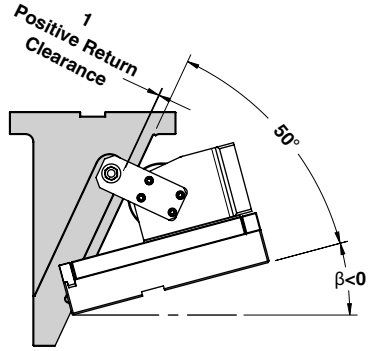
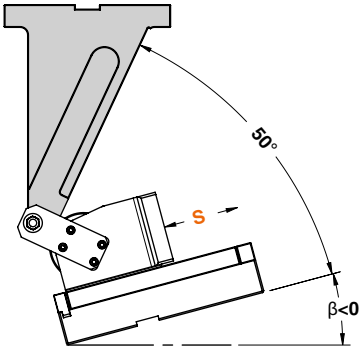


OMCR CODE	ROLLER CAM MODEL	Stroke (mm)	Work Angle	Overall Dimensions (mm)						
		S	β	α	A	B min.	C	D	E	F
DCRX1520.50.H15	CRX15.050 CRX20.050	48	-15°	65°	200	66	170	140	69	140
DCRX1520.50.H10		48	-10°	60°	175	59	170	140	69	140
DCRX1520.50.H05		48	-5°	55°	155	55	170	140	69	140
DCRX1520.50.000		48	0°	50°	145	52	170	140	69	140
DCRX1520.50.L05		48	5°	45°	135	50	170	140	69	140
DCRX1520.50.L10		48	10°	40°	130	49	170	140	69	140
DCRX1520.50.L15		48	15°	35°	125	49	170	140	69	140
DCRX1520.50.L20		48	20°	30°	120	49	170	140	69	140
DCRX1520.50.L25		48	25°	25°	110	49	170	140	69	140
DCRX1520.50.L30		48	30°	20°	100	50	170	140	69	140
DCRX1520.50.L35		48	35°	15°	95	52	170	140	69	140
DCRX1520.50.L40		48	40°	10°	90	53	170	140	69	140
DCRX1520.50.L45		48	45°	5°	85	50	170	140	69	140
DCRX1520.50.L50		48	50°	0°	80	0	170	140	69	140
DCRX1520.80.H15		CRX15.080 CRX15.100 CRX20.080 CRX20.100	78-98	-15°	65°	310	66	220	190	94
DCRX1520.80.H10	78-98		-10°	60°	260	59	220	190	94	190
DCRX1520.80.H05	78-98		-5°	55°	230	55	220	190	94	190
DCRX1520.80.000	78-98		0°	50°	210	52	220	190	94	190
DCRX1520.80.L05	78-98		5°	45°	185	50	220	190	94	190
DCRX1520.80.L10	78-98		10°	40°	180	49	220	190	94	190
DCRX1520.80.L15	78-98		15°	35°	170	49	220	190	94	190
DCRX1520.80.L20	78-98		20°	30°	165	49	220	190	94	190
DCRX1520.80.L25	78-98		25°	25°	150	49	220	190	94	190
DCRX1520.80.L30	78-98		30°	20°	145	50	220	190	94	190
DCRX1520.80.L35	78-98		35°	15°	125	52	220	190	94	190
DCRX1520.80.L40	78-98		40°	10°	115	53	220	190	94	190
DCRX1520.80.L45	78-98		45°	5°	105	50	220	190	94	190
DCRX1520.80.L50	78-98		50°	0°	95	52	220	190	94	190

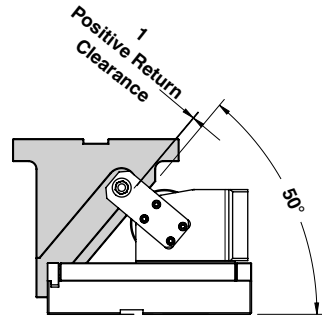
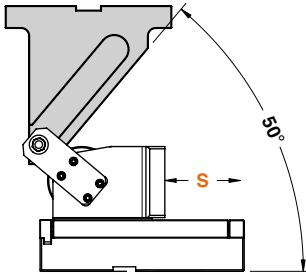


ROLLER CAM DRIVER - TREIBER FÜR ROLLENSCHIEBER - CUNEO PER CAMME A RULLO

FUNCTIONING EXAMPLE FOR WORK ANGLE (β) FROM -5° TO -15°



FUNCTIONING EXAMPLE FOR WORK ANGLE (β)= 0°



FUNCTIONING EXAMPLE FOR WORK ANGLE (β) FROM 5° TO 50°

